

Contents	Page
Introduction	2
SECTION 1 Core Subjects	4
English and English Literature	5
Mathematics and Statistics	6
Science	8
RE	9
SECTION 2 - Route 1 All GCSEs	
Section 2a - Technology	10
Electronic Products	11
Food Technology	12
Product Design	13
Commercial Art and Design	14
Music Technology	15
Separate Science	16
SECTION 2b - Modern Foreign Language	17
French, German and Spanish	18
SECTION 2c – Humanities	20
Geography	21
History	22
Business Studies	23
SECTION 2d - Free Choice all of above plus:	24
Art and Design - Fine Art	25
Drama	26
ICT	27
Physical Education	28
SECTION 3 Route 2 Diplomas	29
Engineering	30
Manufacturing	31
Hair & Beauty	32
Society, Health and Development	33
Environment and Land Based Studies	34
Creative and Media	35
SECTION 4 Route 3 Foundation Learning	36
Motor Vehicles	37
Hospitality	38
Btec Sport	39
Public Services	40
Health and Social Care	40
Personal and Social Development	41
Functional Skills	42
SECTION 5	43
Learning Support	44
Social, Personal and Citizenship Education	45
Careers Education	46
Curriculum Summary	47
Choices Form (home copy)	48
Choices Form (school copy)	49
Diploma/Foundation Learning Expression of Interest Form	50

Introduction

The information in this booklet should help you decide which courses you would like to follow in Years 10 and 11 before continuing with education, training or employment beyond the age of 16.

There are three possible routes through Key Stage 4

Route 1: All GCSEs -

Route 2: Diploma plus some GCSEs

Route 3: Foundation Learning plus some GCSEs

If you are considering following any of the Diploma or Foundation Learning courses you must return the Expression of Interest Form (found at the back of this booklet) by **Friday 21 January**. This does not mean that you have to follow a Diploma or Foundation Learning course as your final decision is not made until the end of this half term. However, we need to know the maximum possible number of students, which has to be submitted to the Local Authority before the end of January, so that provision across a wide number of institutions can be organised.

Before you make your choices it is **strongly advised** that you attend to both the Options Evening on **Thursday 13 January** and the Parents' Evening on **Tuesday 8 February** with your parents. Talk about your choices with your teachers, your tutors, Mr Gibson, Learning Co-ordinator for Year 9, and Mr Jones, Head of Careers. There will be representatives from the Careers Service, Bishop Burton College and East Riding College at the Options Evening in addition to teachers from school. The evening will be made up of a general presentation by Mr Hodson in the main hall outlining the options choices process, along with presentations by subject staff outlining GCSE courses, Diplomas and Foundation Learning courses. The subject presentations will be an opportunity to see what the subject offers at Key Stage 4 and it will not be possible to ask specific questions about particular students. You will be able to ask these questions at the Parents' Evening on 8 February.

The evening will last from 6.00 to 7.30 p.m. and be split into two parts. Parents and students from 9B, 9C and 9F will see the options presentation in the main hall at 6.00 p.m. when 9M and 9S are visiting different curriculum areas to see subject presentations. At 6.45 p.m. 9M and 9S will be able to see the options presentation in the main hall while 9B, 9C and 9M can see subject, college presentations. All students who are considering following Foundation Learning Courses should go to the presentation in RE2 at 6.00pm followed by the options presentation at 6.45pm.

The deadline for returning the completed form found at the back of this pack is:

Wednesday 16 February

EVERYONE in Year 10 takes the following core subjects:

ENGLISH

MATHEMATICS

SCIENCE

GAMES

RELIGIOUS EDUCATION

SOCIAL, PERSONAL AND CITIZENSHIP EDUCATION (SPACE)

In addition you will then need to choose from one of three routes:

Route 1 - You choose a further 4 GCSEs from the following areas:

A Technology B Modern Foreign Language C Humanity D Free Choice

Route 2 – Diploma plus one further GCSE from free choice list

Route 3 – Foundation Learning plus one further GCSE from free choice list

It is our intention that:

You will be entered for a GCSE examination, or equivalent qualification, in every subject except Games and Space. It must be emphasised that your final grade will be affected by:

- the effort and commitment you show throughout the course
- completion of all coursework/controlled assessment by the required date
- regular attendance at lessons

The examinations will usually start at the beginning of May in Year 11 although many subjects are now modular and examinations occur throughout Years 10 and 11. You must be present for all relevant exam sessions in order to be given a final grade.

SECTION 1

CORE SUBJECTS

All Students will study the following subjects

**English
Mathematics
Science
RE**

GCSE ENGLISH AND ENGLISH LITERATURE



In English you will work towards 2 GCSEs, one in English Language and one in English Literature.

English Language

Unit 1

There is an external examination, which consist of a reading section and a writing section. You will write responses to a series of questions based on 3 reading resources and you will do 2 compulsory writing tasks.

Unit 2

The speaking and listening activities that will be assessed by your teacher. These include:

- Presenting
- Discussing and listening
- Role playing

Unit 3

There are 3 controlled assessments. These are:

- Extended Reading - You will study a text and write an essay on it.
- Creative Writing - You will do 2 creative writing tasks.
- Spoken Language Study - You will do one task.

English Literature

Unit 1 Exploring Modern Texts

There is an external examination based on the study of two texts

Unit 2 Poetry Across Time

There is an external examination based on the study of a cluster of poems. You will also be asked to write about an unseen poem i.e. a poem that you have not studied.

Unit 3 The Significance of Shakespeare and the Literary Heritage

There is one controlled assessment based on the study of a Shakespeare play, which you link with the study of a text from the Literary Heritage.

If you have any questions, please see Mr Stevenson or Mrs Wedgwood.



GCSE MATHEMATICS



Maths is everywhere!

A GCSE in maths is essential for many careers and courses.

Mathematics is about pattern and structure; it is about logical analysis, deduction and calculation within these patterns and structures.

Mathematics has a massive influence on our everyday lives and contributes to the wealth of the country.

Course content

The course content is determined by AQA GCSE Mathematics. Since classes are set for Mathematics, the content of lessons is tailored to suit the ability of the students in each set. This is intended to allow you to make the best possible progress. There is a considerable degree of overlap between the sets. You should note that the level of entry in the examinations is not determined by the set you are in, but by your own performance and potential.

Exam board & website

AQA GCSE Mathematics

www.aqa.org.uk

Assessment

This is a modular GCSE course.

You will sit Unit 2 in March of Year 10, which is also worth 33% of your GCSE.

This exam lasts for one hour and 15 minutes and you cannot use a calculator.

You will sit Unit 1 in June of Year 10, which is worth 27% of your GCSE.

This is a one hour exam and you can use a calculator.

The final exam, Unit 3, is in June of Year 11 is worth 40% of your GCSE.

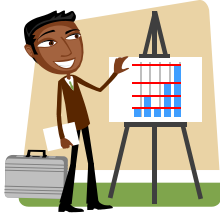
This is a one and a half hour exam and you can use a calculator.

There is no coursework.

There are two tiers of entry to the GCSE examination; Foundation and Higher.

The tier at which you will take the exam depends on your level of performance.

For more information see: Mr Hamshaw-Hart



GCSE STATISTICS



Statistics are all around us!

Read any newspaper or watch the TV and you will be bombarded with statistics. Statistics are used in a wide range of careers to analyse information from many different and interesting areas.

GCSE Statistics is an ideal preparation for

- An A level in Mathematics
- A level subjects which use Statistics, e.g. Geography, Psychology and Biology
- A wide range of careers

Course content

You will study this course in Y11 in addition to GCSE Mathematics.

There is some overlap with the Mathematics course and you will find that this course assists you in understanding some of your normal Mathematics GCSE.

The aim of this course is develop the following skills:

- Analyse a statistical problem and plan an appropriate strategy. Describe and use appropriate methods to select and collect data.
- Analyse and present data for comparisons and to solve probability and statistical problems.
- Use the language and facts of statistics and probability to perform computations.
- Identify and communicate inferences and interpretation of information.

Exam board & website

The course is AQA G.C.S.E. Statistics (4312)

www.aqa.org.uk

Assessment

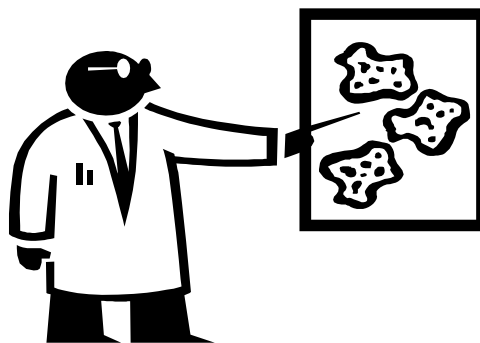
One examination paper worth 75% of the total mark., this will last either 1h 30 mins or 2 hours depending on the tier of entry.

A piece of coursework and a related coursework examination worth 25% of the total mark.

There are two levels of entry to the GCSE examination; Foundation and Higher. The level at which you will take the exam depends on your performance over the two years.

For more information see: Mr Hamshaw-Hart

GCSE SCIENCE



Science explains the world around us. It helps people to be logical, analytical, practical, imaginative and creative. Qualifications in Science are required by a wide range of employers. If you want to be at the leading edge of Human development, study Science.

Course content:

Science is compulsory in Year 10.

All GCSE's in Science are changing in September 2011. At the moment all specifications are undergoing late minute amendments before they are agreed by the relevant government body.

Once there is final approval of the specifications, the department will be looking in detail at all of them so that the most appropriate course can be selected for the students.

As soon as this is done, we will send out a letter with the details of the specification(s) chosen.

For more information please contact Mr Wilkinson

RELIGIOUS STUDIES



Because you want a career with a difference!

The study of RS is useful for those wishing to study journalism, politics. It is good for jobs involving deployment of human resources, and public services-including teaching, the police force and much more. A large number of our students opt to continue the subject at A-level. It goes well particularly with English, Media Studies, History or Psychology. It is held in high regard by universities, particularly if you are studying English Literature, History, Philosophy, Theology or Law.

Course content

The aim of the course is for you to do an academic study of a major world religion (Christianity), to understand the impact of belief on the life of a believer. It comprises 2 sections, some elements of which you have been studying for a year already.

Philosophy (Unit 7) a study of Philosophy which deals with life's big questions such as the purpose of life. This includes an exploration of the following topics:

- Science of religion
- Life after death
- The existence of God
- The characteristics of God
- Revelation and Enlightenment
- The problem of evil

Both belief and unbelief will be explored meaning that no personal faith is necessary. Lessons include lively discussions and debate which prove popular with pupils.

Ethics (Unit 2) a study of the effects of Christianity on behaviour, attitudes and lifestyles. This includes an exploration of the following ethical issues:

The right to life

The use of medical technology

Personal responsibility

Social responsibility

Global concerns

Conflict

You study issues impartially and are encouraged to develop the skills of presenting and evaluating diverse arguments. Your own opinions are encouraged and respected. You will explore issues of right and wrong, thinking about your own stance on moral issues as well as that of others.

Exam Board Website

GCSE -Religious Studies – AQA Syllabus A units 7 and 2

www.aqa.org.uk

Assessment

Assessment is in the form of two 1½ hour exams (one for each part of the course)

NB Some students will be entered for one AQA paper (usually unit 2) only and will be accredited with a 'short course' grade.

For more information see: Mr Dent

ROUTE 1 ALL GCSE's

SECTION 2a – TECHNOLOGY BLOCK

**You must choose 1 of the following
Technology related courses**

**Electronic Products
Food Technology
Product Design
Commercial Art & Design
Music Btec
Separate Science**

ELECTRONIC PRODUCTS



Preamble – why study the subject, what makes it exciting

Technology is an exciting option that provides opportunities to explore, design and make. The courses will develop your creativity and ability to solve problems in a methodical and practical way. Much of the coursework will help you to create an analytical, enquiring approach so necessary in other subjects. These skills are much in demand from employers as well as providing a firm foundation for further and higher education or modern apprenticeships.

Course content

You will spend most of your time in year ten using computer aided design and simulation software to learn about individual components and integrated circuits. You will also build and test a variety of different projects including alarms, counters and amplifiers. In year eleven, there will be a clear focus on ‘cutting edge’ technology including Robotics and the programming of Peripheral Interface Controllers to control electronic systems.

Controlled Assessment

- A substantial piece of work consisting of a design folder and a working electronic product.

An ideal preparation for

- Further study of Electronics or Engineering
- A Level Product Design
- An apprenticeship in Engineering

Exam board and website

AQA GCSE Design and Technology: Electronic Products
http://www.aqa.org.uk/qual/gcse/des_tec_ep.php

Assessment

<i>Controlled Assessment</i>	<i>Examination</i>
60%	40%

For more information please see: Mr Gosling

FOOD TECHNOLOGY



Preamble – why study the subject, what makes it exciting

Technology is an exciting option that provides opportunities to explore, design and make. The courses will develop your creativity and ability to solve problems in a methodical and practical way. Much of the coursework will help you to create an analytical, enquiring approach so necessary in other subjects. These skills are much in demand from employers as well as providing a firm foundation for further and higher education or modern apprenticeships.

Course content

During Year 10, you will develop your knowledge and skills through a range of practical work, experiments and short assignments. A commitment to bring ingredients each week to practise the practical elements of the course is essential, as is the desire to work in a professional manner. Please note that a significant part of this work involves an awareness of commercial practice and, as such, requires boys to work to precise specifications.

The main areas covered on this course are:

- Nutrition and health
- Food preparation and processing
- Food safety and hygiene
- Control systems used in the production of food.

Controlled Assessment

- A substantial piece of work consisting of a design folder and the development of a food product.

An ideal preparation for

- A Level Food Technology or Product Design
- An apprenticeship within the Food or catering Industry

Exam board and website

AQA GCSE Design and Technology: Food Technology

http://www.aqa.org.uk/qual/gcse/des_tec_ft.php

Assessment

<i>Controlled Assessment</i>	<i>Examination</i>
60%	40%

For more information see: Mrs Leonard

PRODUCT DESIGN



Preamble – why study the subject, what makes it exciting

Technology is an exciting option that provides opportunities to explore, design and make. The courses will develop your creativity and ability to solve problems in a methodical and practical way. Much of the coursework will help you to create an analytical, enquiring approach so necessary in other subjects. These skills are much in demand from employers as well as providing a firm foundation for further and higher education or modern apprenticeships.

Course content

This is a design and make course for students with imagination and flair. Items to be made can be varied, and students will gain experience of working with wood, metals and plastics. Graphical skills are important, as is the need for an open, questioning mind and knowledge of the working properties of a range of materials.

Controlled Assessment

- A substantial piece of work consisting of a design folder and an artefact.

An ideal preparation for

- A Level Product Design
- An apprenticeship in construction or Design

Exam board and website

AQA GCSE Design and Technology: Product Design

<http://store.aqa.org.uk/qual/newgcse/pdf/AQA-4555-W-SP-10.PDF>

Assessment

<i>Controlled Assessment</i>	<i>Examination</i>
<i>60%</i>	<i>40%</i>

For more information see: Mr Gosling

COMMERCIAL ART AND DESIGN



This is a course that enables you to gain skills, knowledge and confidence through a broad range of vocationally based assignments. You will produce practical outcomes in response to work-related project briefs. You will have to consider exactly what the client wants and how best you can deliver it as well as an awareness of good, safe workshop/studio practice. You should have the opportunity to participate in some 'real-life' projects.

Course content

You will be given the opportunities to work in the following areas:

Graphic Design	Illustration	Digital Photography
Computer Art	Fashion Design	Animation

Unit 1: Portfolio of Work.

You are required to present a portfolio of work which must include more than one project. Each project must demonstrate an ability to sustain work from initial starting points to a final piece or pieces and include evidence of research, development of ideas and meaningful links with the work of other artists and an understanding of good working practice.

Unit 2: Externally Set Task

This is a question paper issued by the exam board from which you choose one starting point to prepare and develop a personal outcome. During this time you will have a total of 10 hours focussed study in exam conditions to produce evidence of unaided work.

Exam Board & Website

AQA

www.aqa.org.uk

Assessment

60% Coursework 40% Externally Set Task

Your teacher will give you lots of help and guidance throughout the course and you will be regularly assessed so that you know how well you are doing and how to improve your work.

The range of creative skills you develop as a student of Commercial Art and Design will enable you to access a broad range of careers. As our workplace evolves there are a growing number of opportunities for the creative thinker who had developed skills in multimedia and new technologies

For more information see: Mr Branton or Miss Parker

BTEC MUSIC



BTEC Firsts - Level 2 - EDEXCEL

BTEC courses in music give students incredible flexibility and choice. They offer an exciting range of units from which students can choose. They are thorough, relevant and enjoyable. Students will be advised as to the most appropriate units for them. We will take into account their learning style, interests and skills. The BTEC courses can make excellent preparation for traditional A Level Music, Music Technology, Vocational Courses, or the Work Place. As they are equivalent to 2, or 4, GCSE's they also provide an excellent opportunity to gain extra qualifications and / or points.

The Extended Certificate in Music is the equivalent to 2 GCSE's grades A*-C. Students select units making up 30-credits from the list below. Units 1 and 2 are mandatory.

The Diploma in Music is the equivalent to 4 GCSE's grades A*-C. Students select units making up 60-credits from the list below. Units 1,2 & 3 are mandatory.

Awards are made as Pass, Merit, or Distinction. A Pass is the equivalent of a GCSE 'C' grade.

<u>UNIT CHOICES</u>	Credits	Initial preferences
1 Working in the Music Industry	5	
2 Professional Development in the Music Industry	5	
3 Planning and Creating a Music Product	10	
4 Solo Musical Performance	10	
5 Exploring Musical Composition	10	
6 Working as a Musical Ensemble	10	
7 Exploring Computer Systems Used By Musicians	10	
8 DJ Technology and Performance	10	
9 Producing a Musical Recording	10	
10 Developing as a Musical Performer	10	
11 Rehearsal Techniques for Musicians	10	
12 The Development of Music	10	
13 Exploring Musical Improvisation	10	
14 The Musical World	10	
15 Developing Music Theory	10	
16 Investigating an Area of Music	10	

Please do see Mrs Turner or Mrs Tatman to have a closer look at the specification and unit choices in more detail. We will be happy to answer your queries and advise you of the suitability of the course/s for you. Alternatively look up:

Students can continue to improve their work throughout the course until it meets the required, (or desired!), standard. There are no plans to change the A level provision in the Joint Sixth which presently offers A level Music (AQA) and Music Technology (EDEXCEL).

<http://www.edexcel.com/quals/firsts/pa-music/music/Pages/default.aspx> , click on SPECIFICATION, and survey pages 23, 31, 41, 53, 63, 75, 85, 97, 109, 119, 131, 141, 151, 161, 171, 181.

GCSE SEPARATE SCIENCES



Separate Sciences gives you the extra information and skills you need to get a fuller understanding of Science. This greater depth of knowledge provides a strong foundation for studying Sciences at “A” level.

Although no decision has yet been made as to which specification(s) are to be followed for most students in Years 10 and 11 (the specifications have yet to be ratified by the relevant government body). **We guarantee that we will again be offering students the option of following a course that obtains GCSE’s in the 3 Separate Sciences (Biology, Chemistry and Physics).**

We will select the most appropriate specification(s), and then send out a letter with all the information about the subject content and the format of the examinations as soon as possible.

For more information please contact: Mr Wilkinson

ROUTE 1 ALL GCSE's

SECTION 2b – MODERN FOREIGN LANGUAGE

**You must choose 1 of the following
Modern Foreign Language courses**

**French
German
Spanish**

GCSE FRENCH, GERMAN OR SPANISH



*94% of the world does not speak English as their first language
75% of the world does not speak English at all*

The idea that we can always get by because others learn English is simply not true. In today's world, languages are vital because so many jobs involve contact with other language speakers and also because we are closer than ever to other cultures and other countries. Knowledge of a foreign language can be helpful in lots of different jobs and many employers reward people with language skills with extra salary because they know they are useful in today's international business world. Languages go really well with a wide range of subjects too. When you are choosing what to do in Key Stage 4 and beyond, a language could come in very handy. For example, a language with Business, Engineering or Science will help you when you look for a job later on. Many universities look favourably on candidates with a foreign language qualification and at universities such as Edinburgh or UCL, a 'C' grade or above in a Modern Languages GCSE is a requirement of entry for any of their courses.

In Key Stage 4 at Beverley Grammar School, you can opt to take French, German, Spanish or any two of these languages.

COURSE CONTENT:

In French, German or Spanish, you will study four major topic areas or 'contexts' – Lifestyle, Leisure, Home & Environment and Work & Education. In each of these contexts, you will be learning about how the language works – its grammar and structures and how they fit together, so that you can produce more complex and varied spoken and written language. In each lesson, you will be developing your skills and confidence in listening, speaking, reading and writing as well as increasing your vocabulary. You will also be finding out more about French, German or Spanish speaking people and the places in which they live.

EXAM BOARD AND WEBSITE: AQA (www.aqa.org.uk)

ASSESSMENT

The assessment in each course is as follows:

You are tested in the four skills of listening, reading, speaking and writing.

In listening and reading, you will take an examination at the end of the course and all the questions set are now written in English. There will be a separate test, at either Foundation or Higher Tier, for

each of these skills. Listening and reading each carry 20% of the total marks towards your final GCSE grade.

In speaking, you submit two short tasks, which are conducted and marked by your own teacher. Both tasks will be in the form of a dialogue. Speaking carries 30% of the total marks.

In writing, you submit two controlled assessments for marking by AQA. Writing also carries 30% of the total marks.

GCSE SPANISH

Spanish is a new venture at Beverley Grammar School, and we are offering *ab initio* GCSE Spanish for the first time. Please note, however, that since students have not previously studied Spanish in Key Stage 3, they will need to be willing to attend a weekly after-school lesson throughout the two year course, in addition to the two timetabled Spanish lessons per week. This will be necessary to make up the necessary ground in this new language in order to reach the required standard in time to take the examination. Students who are unsure if they can offer this level of commitment to the subject are therefore advised not to choose Spanish as a Modern Foreign Language option.

For more information please see: Mrs Pickering

ROUTE 1 ALL GCSEs

SECTION 2c - HUMANITIES BLOCK

**You must choose 1 of the following
Humanities courses**

**Geography
History
Business Studies**

GEOGRAPHY



You have come to an important point in your education. Are you interested in studying geography further? You should be, because geography tackles the big issues. The underlying principles of this course are:

- To produce students that are aware of their responsibility to other people, the environment and the sustainability of the planet
- To give opportunities for students to undertake individual research and investigative work and to make use of modern information technologies, including GIS.

The world in which we live is likely to change more in the next 50 years than it has ever done before. Geography explains why, and helps to prepare you for those changes. If you enjoy studying geography – carry on studying it! You are more likely to obtain your best results in a subject you enjoy.

Course content

This course focuses on the geographical processes that shape our world through the study of physical and human geography. There are 4 units of work:

<p>Unit 1: Managing places in the C21st. You will study one the following topics:</p> <ul style="list-style-type: none"> • The coastal environment or • The urban environment 	<p>Unit 2: Hostile world. You will study one of the following topics:</p> <ul style="list-style-type: none"> • Living with natural hazards or • The challenge of extreme Environments.
<p>Unit 3: Investigating the shrinking World. You will study one of the following topics.</p> <ul style="list-style-type: none"> • The globalisation of industry • Global Tourism 	<p>Unit 4: Controlled Assessment. You will do 2 tasks. The first is a local investigation including fieldwork. The second is a geographical issue investigation about either energy in the 21st Century or water: a precious resource.</p>

Exam Board & Website

AQA: Syllabus B. www.aqa.org

Assessment

There are 4 parts to this modular course (Unit exam can be taken in January or June in Years 10 and 11. For example we will enter students for Unit 1 in January of year 10. Students have the opportunity to re-sit units 1, 2 or 3.

- **Unit 1** Managing places in the 21st Century. **1 hour exam** (25% of total marks)
- **Unit 2** Hostile world. **1 hour exam** (25% of total marks)
- **Unit 3** Investigating the shrinking world. **1 hour exam** (25% of total marks)
- **Unit 4** Controlled Assessment: (25% of total marks)

For more information see: Mr Elvidge or Mr Gibson

HISTORY: MODERN EUROPEAN AND WORLD HISTORY



- **HISTORY** gives us a better understanding of current affairs by looking at their background and origins.
- **HISTORY** helps you weigh up questions and possibilities in your personal life and to consider your rights, responsibilities and place in society.
- **HISTORY** helps us confront racism and prejudice.
- **HISTORY** develops essential skills for many careers and life experiences; report writing and the persuasive presentation of information through inference, analysis and integration of details into a coherent argument; decision making and planning by asking the right questions, using previous knowledge, the process of elimination, speculation and the testing of ideas; research and reading skills; interpreting and evaluating evidence.
- **HISTORY** helps us enjoy more fully and evaluate more critically art, music, literature, film, theatre and television.
- **HISTORY** tells us some cracking stories which reflect the very essence of life itself; bravery, cowardice, loyalty, treachery, honesty, love, lust, determination, success, failure and faith.
- As one of the more traditional academic subjects with essential skills **HISTORY** is a highly valued qualification by top universities and professions such as law, finance, media, journalism, business management, government and the civil service.

Course content

How was British Society changed, 1890-1918? Russia, 1905-1941. The USA and Vietnam 1954-74. A New World? 1948-2005 (Eastern Europe under communism, terrorism since 1969, the 2003 Iraq War).

This course provides considerable variety in terms of a study of different societies and cultures. The units also provide an invaluable insight into our political system and how it works (Votes for Women and social reform in Britain), different political, economic and social ideas (Russia, Northern Ireland and Israel/Palestine) and the roots of the major foreign policy issues of the early 21st century (the Middle East, the Vietnam War and Eastern Europe). Their study also involves looking at WW1, the Cold War and the USA.

Exam Board & Website

OCR

www.ocr.org.uk/historyb/newgcse

Assessment

Two written papers (Paper 1:2hrs 45% of final mark; Paper 2:1½ hrs 30% of final mark). A coursework task on The USA and Vietnam representing 25% of the final mark.

For more information see: Mr Morgan, Mr Cutler or Mr Webb

BUSINESS STUDIES



Why Business Studies?

- An interesting course
- Good employment prospects
- Very popular at university
- Enjoyed by students
- Will make you think

Course content

Basically the course follows the syllabus set by the AQA exam board which contains themes comprising: starting a business, growing as a business, legal aspects of business, internal organisation of business, accounts, marketing, production and people in organisations. You should have relatively high numeracy skills and enjoy working with figures.

Exam Board & Website

AQA

www.aqa.org.uk

Sample exam papers can be found under 'current GCSE' on the AQA website.

Assessment

By examination based around 3 Assessments

Paper 1 - 40% 1 hour written paper "Starting up a Business" Exam

Paper 2 - 35% 1 hour written paper "Growing as a Business" Exam

25% Controlled assessment "Investigating a Business" based around a pre-release theme and students will have specific hours to write up findings under controlled conditions. 5-8 hours are allowed for independent research.

Two tier papers are offered:

Foundation = C - G grade

Higher = A* - E grade

For more information see: Mr Coull

ROUTE 1 ALL GCSEs

SECTION 2d – FREE CHOICE BLOCK

You must choose an additional subject

All subjects in previous sections plus

**Fine Art
Drama
ICT
Physical Education**

ART AND DESIGN FINE ART



This is a course that enables you to develop your skills and appreciation of art and to discover the artist within you. You will be encouraged to think and work independently as well as improve your creative abilities. You do not have to be brilliant at drawing, just willing to learn new skills and methods to produce good quality outcomes. You will have the satisfaction of exhibiting your work at the end of the course.

Course content

You will be given the opportunities to work in the following areas:

Drawing and Painting Sculpture Printmaking
Mixed Media Computer Aided Design

Unit 1: Portfolio of Work.

You are required to present a portfolio of work which must include more than one project. Each project must demonstrate an ability to sustain work from initial starting points to a final piece or pieces and include evidence of research, development of ideas and meaningful links with the work of other artists.

Unit 2: Externally Set Task

This is a question paper issued by the exam board from which you choose one starting point to prepare and develop a personal outcome. During this time you will have a total of 10 hours focussed study in exam conditions to produce evidence of unaided work.

Exam Board & Website

AQA

www.aqa.org.uk

Assessment

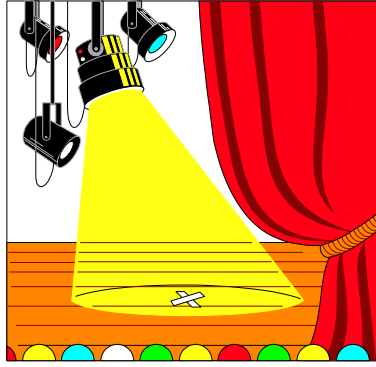
60% Coursework 40% Externally Set Task

Your teacher will give you lots of help and guidance throughout the course and you will be regularly assessed so that you know how well you are doing and how to improve your work.

The range of creative skills you develop as a student of Fine Art will enable you to access a broad range of careers. As our workplace evolves there are a growing number of opportunities for the creative thinker who had developed skills in multimedia and new technologies

For more information see: Mr Branton or Miss Parker

DRAMA



This is a very enjoyable course that is mostly practical, with some written work. You will do a lot of practical work in lessons, working from scripts, as well as doing devised and improvisation work. You will go to see plays at regional theatres and write reviews about them. You will do some theory work, which will lead to the written examination.

Unit 1 Written Paper 40 %

The written paper consists of three sections but you choose to answer two out of the three sections. These are:

- Writing an evaluation of practical work that you have completed during the course.
- Writing about a play that you have studied and performed.
- Writing about a live theatre production that you have seen i.e. a review.

Unit 2 Practical Work 60%

This is the practical section and you will spend most of your lessons doing practical work.

There will be a number of controlled assessments, which will be marked by your teacher and externally moderated. The options include:

- Devised Thematic Work
- Acting
- Improvisation
- Theatre in Education
- Physical Theatre
- Set Design
- Costume
- Make-up
- Properties
- Masks
- Puppets
- Lighting
- Sound
- Stage Management

However, we usually focus on the first three options.

If you have any questions, please see Mr Stevenson or Mrs Wedgwood.

INFORMATION AND COMMUNICATION TECHNOLOGY



BTEC ICT Practitioners DIPLOMA (option)

Examination board: EDEXCEL

This course is for the students who followed the **IT Extended Certificate** course in Year 9.

Examination: there is no written examination for the course. All assessments are practical and count towards the final examination grade.

Grades: the Year 9 course gives students the chance to gain the equivalent of 2 GCSE A* to C grades. *The diploma course* extends this to the equivalent of 4 GCSE A* to C grades.

Units of study – we will be covering 3 units:

Computer Systems – how to connect and use different hardware, interfaces, types of computer system, range of software, working safely.

Software installation and upgrade – practical experience of upgrading and installing software, configuring software, licenses and license agreements, testing installations to make sure everything works.

Multimedia design – looking at different types of digital content and multimedia products. Students will be developing skills in creating multimedia products including the ability to create a short video

This course allows students to become confident in the installation and upgrade of software and hardware in computer systems. In addition there is the chance for them to explore the world of multimedia and how to construct multimedia products.

For more information see: Mr Pool

PHYSICAL EDUCATION



- You will learn how to perform better at sport and take on the roles of coach, analyser, leader, official
- You will learn about health and fitness and how to train for different activities
- You will understand the factors that influence individuals and groups taking part
- You may want to have a career in sport e.g. physiotherapist, coaching, teaching
- You may want to go on to study A Level and then take a degree in Physical Education at university
- You have a sporting qualification to add to your other G.C.S.E.'s. You have a range of skills to take to the next stage of your life.

Course content

Theory Based Lessons

- Health and fitness factors affecting performance
- The principles of training. How to get fit for activities
- Factors affecting individual performance and participation
- Social and cultural factors affecting participation.

Practical Based Activities

You will do a range of activities. You will be involved and assessed as:

- a performer
- an organiser
- a leader / coach
- an official

Your best four assessments of which two must be as a performer will count for your GCSE.

Exam Board & Website

AQA www.aqa.org.uk

Assessment

- Theory based lessons leading to an examination in the summer of year 11 – 40% of the marks
- Practical based activities. – 60% of the marks.

For more information see: Mr Walters

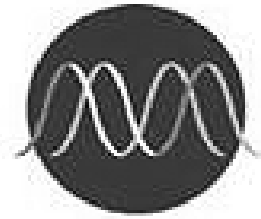
SECTION 3 – DIPLOMAS

ROUTE 2

The following diplomas are available to study next year:

**Engineering
Manufacturing
Hair and Beauty
Society, Health and Development
Environmental and Land Based Studies
Creative and Media**

THE HIGHER DIPLOMA IN ENGINEERING AT BEVERLEY GRAMMAR SCHOOL AND EAST RIDING COLLEGE



The qualification will be equivalent to 7 GCSE passes at Grades A*-C and so you will need to have a good ability in English, mathematics and science.

Engineering is all around us. It plays an important part in what we do every day and has an impact on everyone's life. Engineering creates the infrastructure in which we live, work and spend our leisure time. So, not surprisingly, the engineering sector is huge. Over 1.6 million people already work in engineering-related jobs in sectors like health, entertainment, farming, architecture, mechanics, electronics, telecommunication, biomedicine, aerospace, transport, design, oil, gas, chemical and nuclear energy and utilities, engineering manufacture and building services.

If you enjoy challenges and problem-solving, are creative, innovative, have flexible skills and are interested in new technology, your career prospects in engineering are excellent.

The Diploma in Engineering opens up the ideas and concepts behind engineering, and how they impact the modern world. You'll be introduced to key engineering principles such as design, materials, electronic systems, maintenance and manufacturing. You'll also get lots of practical experience and study what makes innovations succeed, how new materials contribute to design and how to develop and launch new ideas.

The Diploma in Engineering focuses on three main themes:

The Engineered World

You'll learn about the different engineering sectors and engineering's diverse role. You could, for example, research and examine the use of microprocessor technology in CGI movies, theme park rides or a music sound studio.

Discovering Engineering Technology

In addition to a range of other subjects, you'll learn how to use computer software packages and systems to design and manufacture engineering components. You could, for example, set up and use computer systems to design a one-off artificial limb for an Olympic athlete.

Engineering the Future

You'll learn about the relationship between innovative engineering design and business success. You could, for example, find out how to develop innovative and creative ideas and get all-important finance for a project.

Assessment

The course comprises 7 internally assessed units and 1 external examination.

An ideal preparation for

A career in Engineering, Science, Technology, Construction or Design.

In addition, an engineering qualification is an ideal preparation for a wide range of other careers where a logical and practical approach to the application of skills and knowledge is important.

For further information please see: Mr Gosling, Engineer@beverleygrammar.co.uk
www.engineeringdiploma.com www.direct.gov.uk/diplomas

THE HIGHER DIPLOMA IN MANUFACTURING AND PRODUCT DESIGN AT BEVERLEY HIGH SCHOOL



The qualification will be equivalent to 7 GCSE passes at Grades A*-C and so you will need to have a good ability in English, Mathematics and science.

The diploma features a unique approach to learning that mixes the practical with theoretical to provide you with the best of both worlds. You get the chance to visit employers and complete at least 10 days work experience, as well as learn in two schools.

You will also develop a detailed understanding of manufacturing and product design, as well as a range of practical skills needed to work in this and many other sectors. There is also a substantial business element where you will learn about how manufacturing businesses are run. Through working on a project and having the chance to choose additional qualifications, you will be able to study areas you are particularly interested in.

This qualification will also help you to develop the transferable skills which are an essential part of studying, work and everyday life. These include communication, maths and ICT, as well as team working and creative thinking.

With many next steps available to you after the Diploma in MPD, it is a good qualification if you are looking to keep your options open. A variety of university and college courses, a wide range of Apprenticeships and the world of work are all next steps you will be able to consider.

If you enjoy challenges and problem-solving, are creative, innovative, have flexible skills and are interested in new technology, your career prospects in design and manufacture are excellent.

The Diploma in Manufacturing and Product Design (MPD) brings learning to life and will give you the opportunity to develop an understanding of the world of manufacturing and product design.

This qualification offers a learning experience that directly links schools and colleges with work and employers.

As part of the Diploma in MPD you will learn specifically about manufacturing and product design through focusing on the three different themes of:

- **Product design and material science**
- **Business and enterprise**
- **Production systems**

Assessment

The course comprises 7 internally assessed units and 1 external examination.

An ideal preparation for

A career in Product Design, Engineering, Science and Technology.

In addition, a manufacturing and product design qualification is an ideal preparation for a wide range of other careers where a logical and practical approach to the application of skills and knowledge is important.

**For further information please see: Jane Howarth j.howarth@beverleyhigh.net
<http://www.manufacturingdiploma.co.uk/students/about-the-diploma>**

www.direct.gov.uk/diplomas

HAIR AND BEAUTY STUDIES



Diplomas in Hair and Beauty Studies equip learners with skills and knowledge which prepare them for a career in the hair and beauty industry. Diplomas enable learners to make informed decisions to progress into employment with industry training, or to further or higher education.

For the Diploma in hair and beauty studies your course will look at 3 main areas:

1. **Employability:** The global environment in which hair and beauty businesses operate, plus personal presentation, hygiene and wellbeing. Learn the principles of basic hair, beauty and nail treatments and routines – along with historic and cultural differences
2. **Customer interaction:** Learn communication skills from client consultation to managing expectations, as well as promotion and selling by recommendation. Introduces basic business systems and processes in a salon reception
3. **Creativity and innovation:** Investigate how personality, culture, race, gender, fashion and religious influences can be expressed through hairstyles, skin care and make-up techniques. Learn the importance of innovation in hair and beauty product design

These are some of the things you might do on your course:

- Get to know the sector and the way it works
- See what research goes into making new products
- And, have a go at making your own cosmetic products
- Get tips and hands-on experience in hair, skin and nail care
- Work independently and in teams
- Develop your communication and customer service skills
- Find out what's involved in running a salon, nail bar, barbershop or spa

If you like the sound of the Diploma in Hair and Beauty Studies, find out more at <http://yp.direct.gov.uk/diplomas>

For more information see: Mrs Alison Gray, East Riding College
alison.gray@eastridingcollege.ac.uk

SOCIETY, HEALTH AND DEVELOPMENT



For the Diploma in society, health and development your course will look at 6 main areas:

1. **The sectors in context:** Focuses on the political, social and economic factors that affect the four sectors today
2. **Principles and values in practice:** The values and principles that underpin and inform the practice of everyone across the sectors. It puts the person using the service at the centre of provision
3. **Partnership working:** New work practices mean that services work much more closely together to ensure the quality, greater flexibility and more efficient use of resources for service provision and support . For example, in family centres, there will be people from social services, health and the children's services all working to ensure quality and integrated services for children and families
4. **Communication and information sharing:** Good communication is crucial to people working across the sectors. What are the barriers to good communication, how can they be overcome and are there tensions between good communication and sharing information with other professionals and respecting the privacy of individuals?
5. **Personal and professional development in the work environment:** Being able to reflect on own practice is a critical aspect of professional development - what did you do well, what can be improved, how can you improve your practice?
6. **Safeguarding and protecting individuals and society:** People are often working with the most vulnerable people in society. It is important to understand what needs to be done to ensure that people are kept safe.

These are some of the things you might do on your course:

- Get involved in supporting other people
- Learn about four of the UK's biggest sectors:
- Health, Adult social care, the children and young people's workforce and community justice
- And how to meet peoples' needs
- See how organisations and agencies from these sectors work together
- Plus how they share information
- And the values that underpin their work

If you like the sound of the Diploma in Society, Health and Development find out more at <http://yp.direct.gov.uk/diplomas>

For more information see: Ms P Colley
p.colley@beverleyhigh.net

ENVIRONMENT & LAND-BASED STUDIES



Diplomas in Environment & Land-based Studies equip learners with skills and knowledge which prepare them for a career in the Environment & Land-based industry. Diplomas enable learners to make informed decisions to progress into employment with industry training, or to further or higher education.

For the Diploma in Environment & Land-based studies your course will look at 3 main areas:

4. **Plants and Animals:** You'll learn a lot about the animal and plant kingdoms. You will for example gain hands on experience of caring for different types of Animal
5. **Production and working environments:** You will learn the threats to natural environments and manmade environments, you will learn how to keep plants and animals healthy, the organisms that causes diseases or damage, hygiene, economical problems and welfare
6. **Developing the sustainable environment:** you will learn how human lifestyles effect the environment, carryout surveys and investigate how to protect the environment.

The Diploma is all about the Environmental and Land-based sector and includes such subjects as:

- Animal Management and Care
- Plant Management and Care
- Plants and Animals in society
- Sustainable Environment
- Working in the Environmental and Land-based sector
- Monitoring Environments
- Environmental Ecosystems and production systems
- Sources and uses of Energy

These are some of the things you might do on your course:

- Handle and care for a range of animals
- Carry out testing in the College Science Laboratories
- Visit nature reserves to carryout ecological surveys
- Grow a range of plants / crops
- Work on Animal Units / Farms
- Produces a Animal health / Care plan

If you like the sound of the Diploma in Environmental and Land-based Studies, find out more at <http://yp.direct.gov.uk/diplomas>

For more information see: Mr Simon Parker, Bishop Burton College
Simon.parker@bishopburton.ac.uk

CREATIVE AND MEDIA



The Level 1 Diploma will be equivalent to 5 GCSEs, grades D to G.

The Level 2 Diploma will be equivalent to 7 GCSEs, grades A* to C.

Diplomas consist of four different elements:

The Principal Learning – Creative and Media subjects.

The Additional or Specialist Learning (an extra GCSE you can choose e.g. Art/Music/Drama/a Modern Foreign Language).

A project – you choose what you do.

Functional skills – English, Maths and ICT (studied within your normal English, Maths and ICT GCSE lessons).

The Creative and Media Diploma offers you the opportunity to gain the skills, knowledge and experience to turn your creative passion into a career. You will work closely with leading people from the industry – real artists and writers, leading designers and game developers, broadcasters, journalists, photographers and more.

You will study modules in:

Drama

Dance

Graphic Design

Media

Music Technology

Performing Arts

Photography

TV

The Creative and Media Diploma is different from other subjects because, on Tuesdays, you will be taught across a ‘learning partnership’ so that you can take advantage of the best specialist facilities and teachers in the local area. Lessons will take place at Longcroft School and Performing Arts College, Hornsea School and Language College, The Market Weighton School, Bishop Burton College, Hull College, East Riding College, the University of Hull and East Riding Adult Education Service. Transport will be provided and funded by school.

For more information see: karen.arundel@longcroft.eriding.net

SECTION 4 – DIPLOMAS

FOUNDATION LEARNING

The following College Courses are available to study next year. Please see Mrs Dodan or Mr Jones if you are interested in studying one of these:

Includes 3 new areas

1. Vocational course, please choose from:

Motor Vehicles

Hospitality

Btec Sport

Health and Social Care

Public Services

2. Personal and Social Development

3. Functional Skills in English, Mathematics, ICT

IMI INTRODUCTION TO MOTOR VEHICLE TECHNOLOGY



This is a Level 1 course which will take place at Beverley Grammar School and East Riding College.

Mandatory Units

- Introduction to Motor Vehicle Workshop Safety
- Introduction to the Retail Automotive Maintenance and Repair Industry
- Introduction to Workshop Tools and Equipment

Optional Units

- Routine Cooling & Lubrication System checks
- Routine Breaking System checks.
- Routine Wheel & Tyre checks.

This course is aimed at learners who prefer to respond to ‘hands-on’ learning. It has a practical approach to assessment and includes many visual questioning techniques which will stimulate and interest learners.

For more information see: Mr Gosling or Mr Jones

CITY & GUILDS HOSPITALITY NVQ1



This is a Level 1 course and will take place at East Riding College, Gallows Lane, Beverley.

The course is designed as an introduction to working in the hospitality and catering industry. You will have the opportunity to work in a busy kitchen environment, restaurant and bar.

What will you study?

- Food preparation and cooking.
- Food and drink service
- Food hygiene
- Health & Safety

This course will prepare you for a job in the hospitality and catering industry. You could work in a hotel, restaurant, public house or canteen.

For more information see: Mr Jones

BTEC Introductory Certificate in Sport and Leisure



This is a Level 1 course.

The BTEC Introductory Certificate in Sport and Leisure is designed to:

- develop a range of employability skills and techniques, understanding, personal qualities and attitudes essential for success in working life
- develop learners' abilities in sport and leisure through effective use and combination of the knowledge and skills gained in different parts of the qualifications
- provide specialised studies directly relevant to sport and leisure and related sectors in which learners are working or intend to seek employment
- provide a stepping stone into employment in the sport and leisure industry where some previous experience is necessary to gain initial employment
- provide a suitable qualification for learners to progress on to a range of further study at Levels 1 and 2.

Core units

Unit 1: Starting Work in Sport and Leisure.

Unit 3: The Healthy Body.

Personal skills units

Unit 4: Personal Effectiveness.

Unit 5: Social Responsibility at Work.

Unit 6: Financial Management.

Vocational option units

Unit 7: Organising a Sport or Leisure Event.

Unit 8: Issues in Sport and Leisure.

Unit 9: Taking Part in Sport.

Unit 10: Introducing Customer Service.

For more information see: Mr Walters

BTEC FIRST DIPLOMA PUBLIC SERVICES



What is the course about?

This course will take place at MARKET WEIGHTON SCHOOL. It is a LEVEL 1 QUALIFICATION.

The Programme

This programme is designed to prepare learners for careers within many of the uniformed services. The programme promises the opportunity to develop the practical skills that will be essential in entering the uniformed services.

What you will study

- Public Service Skills
- Uniformed Public Services employment
- Uniformed Public Services fitness

Optional Units

- Crime and its effects on security
- Expectation skills
- Law and its impact on the individual

You could go on to:-

Careers in the Army, Navy, Air force, Police Force, Fire Brigade, Ambulance Services and Prison Service.

For more information see: Mr Jones

HEALTH AND SOCIAL CARE

This course will take place at BEVERLEY HIGH SCHOOL. It is a LEVEL 1 QUALIFICATION.

This Course equips the individual to work confidently as a care assistant in Care Homes such as Nursing Homes, Residential Homes, Hospitals as well as domiciliary care settings. After this Level a candidate may wish to progress onto Level 2 in Care.

For further details please see: Mr Hodson

PSD



Aims of the course

- Becoming, confident individuals who are physically, emotionally and socially healthy.
- Being responsible citizens who make a positive contribution to society and embrace change
- Managing risk together with their own well being

Structure of the course

This is a two year course offered for four lessons per week. Students build up a portfolio of evidence leading to a qualification. During this course you will complete different modules from the award book.

There is no exam.

Course Content

The tasks you undertake will be practical and often community based.

They include work experience, sports leadership, managing your own money, community projects such as the Macmillan coffee morning, developing health and social care, food technology and first aid

The course involves time off the school premises on visits, community projects etc.

You will need to show evidence of:

- **Working with other members of the group**
- **Improve your own learning**
- **Problem solving skills**
- **Ability to give an oral presentation**
- **Researching skills**
- **Leading a discussion as part of a group**

Qualifications

PSD Level 1 is equivalent to GCSE grade E
PSD Level 2 is equivalent to GCSE grade B

For more information see: Miss Coe

FUNCTIONAL SKILLS



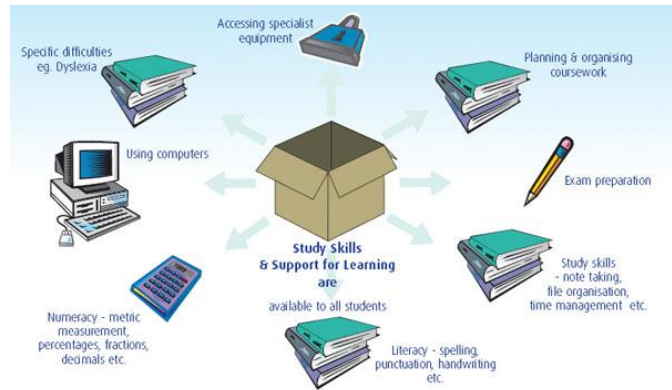
Students need to be equipped with literacy, numeracy and ICT life skills.

The students following a Foundation Learning course will have additional lessons in English, Mathematics and ICT to be able to gain Level 1 qualifications in Functional English, Functional Mathematics and Functional ICT.

For further information please see: Mrs Wedgwood, Mr Hamshaw and Mr Pool

SECTION 5 – STUDENT SUPPORT AND DEVELOPMENT

LEARNING SUPPORT



At Key Stage 4 students with additional needs continue to receive support:

- The department is open from 8am until 4.45 every day Learning Support staff, and resources are available every lunchtime, except Wednesdays.
- Mentoring is offered to identified students, although facilities and resources are available to **all** students in KS 4.
- Teaching Assistants support many GCSE subjects.
- Advice and support may be appropriate from the specialist teacher.
- Computers are available, equipped with “Read and Write Gold” voice activated information software.
- The Learning Support team works closely with all subject areas to enhance learning.
- Parents are welcome to contact the department for advice and support at anytime

During study leave in Year 11, the Learning Support Team offer individual and group revision sessions in most subjects.

Some students may require access arrangements for their external exams. These are in line with what is already in place for internal assessments and are organised in consultation with parents, and by formal application to the exam board.

It is not always appropriate for a student to study 10 or more GCSEs. A very small number of students have Guided Private Study sessions in the Learning Support area. In this time students work on tasks set by their subject teachers, revision tasks, or on agreed homework tasks. These sessions require the ability to work independently and responsibly in the Learning Support area.

For more information see: Mrs Doolan

SOCIAL, PERSONAL AND CITIZENSHIP EDUCATION (SPACE)

SPACE is prepares you for life. It complements the subjects you study by providing opportunities for you to learn about some of the important issues you will face in the adult world. You are encouraged to develop the skills which help you make informed decisions and judgements. You will explore the results of your own attitudes and actions on yourselves, on others and on the world around you.

SPACE lessons will provide you with knowledge, allow debate and promote empathy and tolerance.

There are a number of modules you will cover in SPACE course. These include:-

- HEALTH EDUCATION - including cancer, smoking, alcohol, drugs, diet and heart disease.
- SEX EDUCATION - including AIDS, STIs, contraception, relationships, abortion, birth, child care etc.
- CITIZENSHIP - including crime and justice, prejudice, racism, war, bullying, suicide conservation, pollution, over-population, old age, death, the nuclear issue and youth culture.
- CAREERS EDUCATION - including planning, finding out about careers and the qualifications required for them, assessing and developing skills and qualities, writing job applications, coping with interviews and work experience.
- EXAM REVISION SKILLS - how to prepare for examinations and choose a career.

For more information see: Mrs Taylor

CAREERS EDUCATION

The Careers Library

All students and parents are invited to use the Careers Library at breaks, lunchtimes or after school. We also have a Connexions 'Pop In' session every Tuesday lunchtime. You will be shown how to obtain maximum benefit from the excellent facilities during your SPACE lessons. Up-to-date information services include:-

- the latest computer software (now installed in ICT1, ICT2, ICT3 and IT 4 and School Library extension)
- a careers DVD and CD library
- prospectuses from all universities and colleges (also in the school library)
- reference books, pamphlets and magazines
- careers notice boards

Careers Education

Is approached on a modular basis and includes:-

- | | | |
|--------------------------------|---|--|
| • Self Knowledge | - | personal qualities and needs |
| • Occupational Research | - | job descriptions/entry and training requirements |
| • 16+ Choices | - | 'A' Level, BTEC & NVQ Routes and Armed Forces |
| • Application/Interview Skills | - | application forms/interview technique |
| • Individual Action Plans | - | identification of aims and learning needs |
| • Work Experience | - | 'hands on' approach to the world of work |
| • Health & Safety at work | - | essential knowledge for all potential employees |
| • Progress File | - | curriculum vitae (CV) and personal statement |

Your work experience is an important part of the school curriculum. You will have the opportunity to see at first hand what the world of work is like.

You will spend one week in the Summer Term of Year 10 on your work experience, having applied for the positions which best meet your interests and future plans. The placements are provided, in the main, by the Connexions Service.

Students will also be provided with opportunities to visit East Riding College and Bishop Burton College on 'taster' days. A variety of guest speakers will also inform students of the choices available at 16+. For example, the Armed Forces, CITB and local colleges.

Careers Guidance

All members of staff, either through their subject or student support role, provide careers guidance. Furthermore, in Year 10 or Year 11 you will have at least one careers guidance interview with a Careers Adviser. Additional guidance is always available on request. Careers Advisers will also be available on Parents' Evening.

For more information see: Mr Jones

YEAR 10 SUBJECT CHOICES

Everyone will take the following core subjects:

English	-	4 periods per week (3 in Year 11)
Mathematics	-	3 periods per week (4 in Year 11)
Science	-	5 periods per week
Games	-	2 periods per week
R.E.	-	2 periods per week (1 for route 2 & 3 students)
Social, Personal & Citizenship Education (SPACE)	-	1 period per week

Route 1 students: choose 4 further subjects

Technology	-	2 periods per week
Modern Foreign Language	-	2 periods per week
Humanities	-	2 periods per week
Free Choice	-	2 periods per week

Route 2 students: choose a diploma course to study consisting of the following:

Tuesday will be principal learning	-	5 periods per week
Functional Skills and the project	-	2 periods per week
Free Choice GCSE (Additional Specialist Learning)	-	2 periods per week

Route 3 students: choose foundation learning course consisting of the following:

Tuesday will be a vocational plus PSD	-	5 periods per week
Functional Skills in English, Mathematics and ICT	-	2 periods per week
Free Choice GCSE	-	2 periods per week

Also:

Please remember courses may not run if there are not enough students choosing them. It is, therefore, highly likely that not all subjects in the Free Choice Block will run so please make a 1st and 2nd choice in this block.

It is expected that the majority of students will be able to take their first choices but this cannot be guaranteed. Any student who is unable to take their first or second choice will be seen by Mr Hodson during March, April and May to discuss possible alternatives.

Diploma or Foundation Learning Expression of Interest Form Route 2 and 3 students only

If you are thinking about following a diploma or foundation learning course you must complete the form below and return it to School by **Friday 21 January** at the very latest.

If you complete this form you can change your mind at any time, you can withdraw from the diploma and follow Route 1.

Please tick which diploma or foundation learning course you are considering following:

Diploma

Engineering	
Creative and Media	
Manufacturing	
Hair and Beauty	
Society, Health and Development	
Environment and Land Based Studies	

Foundation Learning

Motor Vehicles	
Hospitality	
Health and Social Care	
Btec Sport	
Public Services	

Name: _____ Form _____

Parent's signature _____ Form Tutor's signature _____

Comments or Concerns

