

Contents

	Page
Introduction	2
SECTION 1 Core Subjects	4
English and English Literature	5
Mathematics and Statistics	6
Science	8
RE	9
SECTION 2 Technology	10
Electronic Products	11
Food Technology	12
Graphic Products	13
NVQ Engineering (Double Award)	14
Applied Art and Design	15
SECTION 3 Route 1, three choices, route 2 & 3, one further choice	16
Art and Design – Fine Art	17
Asdan	18
Business Studies	19
Drama	20
French and German	21
Geography	22
History	23
ICT	24
Music	25
Physical Education	26
Separate Sciences	27
SECTION 4 Route 2 Diplomas	28
Engineering	29
Construction and the Built Environment	30
Creative and Media, Hair & Beauty, Business and Administration Finance	31
SECTION 5 Route 3 College Courses	32
Animal Care	33
BTEC First Diploma in Public Services	34
Construction	35
Hospitality	36
Motor Vehicles	37
NVQ Level One Performing Engineering Operations	38
SECTION 6	39
Learning Support	40
Study Plus	41
Careers Education	42
Social, Personal and Citizenship Education	43
Curriculum Summary	44
Choices Form (home copy)	45
Choices Form (school copy)	46
Diploma Expression of Interest Form	47

The information in this booklet will help you answer the following questions:

WILL I be able to choose which subjects I do next year?

HOW do I know what the lessons will be like?

WILL I have to do coursework?

WHO do I ask for more information?

WHICH examinations (GCSE, Btec, Diplomas others?) will I be doing in Year 11?

HOW do I find out about Careers?

WILL I have the chance to do work experience?

WHAT about Games and P.E. next year?

The answers to all these questions are in this booklet.

READ!

SHARE!

DISCUSS!

ASK!

Due to the introduction of the new Diplomas and a greater range of college courses it has been necessary to bring the whole option choices procedure forward. It has also been necessary to offer three different routes through Key Stage 4:

Route 1: All GCSEs

Route 2: Diploma plus some GCSEs

Route 3: College Course plus some GCSEs

If you are considering following any of the diploma courses you must return the Diploma Expression of Interest Form (found at the back of this booklet) by **Tuesday 3 February**. This does not mean that you have to follow a diploma course as the final decision is not made until the end of this term. However, we need to know the maximum possible number of students, which has to be submitted to the Local Authority before February half term, so that provision across a wide number of institutions can be organised. .

FINALLY: before you make your choices come to both the Options' Evening on **Wednesday 21 January** and the Parents' Evening on **Wednesday 25 March** with your parents. Talk about your choices with your teachers, your tutors, Mr Parish, Head of Year 9, and Mr Jones, Head of Careers. There will be representatives from the Careers Service, Bishop Burton College and East Riding College at the Options' Evening in addition to teachers from school. The evening starts at 6.30 p.m. and will last about one hour.

The deadline for returning the completed form found at the back of this pack is:

Friday 27 March

EVERYONE in Year 10 takes the following core subjects:

ENGLISH

MATHEMATICS

SCIENCE

GAMES

RELIGIOUS EDUCATION

SOCIAL, PERSONAL AND CITIZENSHIP EDUCATION (SPACE)

And, unless you are studying for a diploma or following college courses,

TECHNOLOGY (You can choose which Technology subject you wish to study)

You will be able to choose additional subjects from a range of options. (It may not be possible to offer all the option subjects. This will depend on the numbers choosing certain subjects.)

You can choose route 1 where you will study a further 3 subjects, or route 2 where you will study for a diploma and one additional subject, or route 3 where you will study at college for one day a week and one additional subject.

It is our intention that:

You will be entered for a GCSE examination, or equivalent qualification, in every subject. It must be emphasised that your final grade will be affected by:

- the effort and commitment you show throughout the course
- completion of all coursework by the required date
- regular attendance at lessons

The examinations will usually start at the beginning of May in your Year 11 although some subjects are now modular and examinations occur throughout Years 10 and 11. You must be present for all relevant exam sessions in order to be given a final grade.

SECTION 1

CORE SUBJECTS

All Students will study the following subjects

**English
Mathematics
Science
RE**

ENGLISH



English is a very enjoyable subject that allows you to develop your thinking, reading and writing skills, as well as developing your creativity. You will read a wide range of texts, including novels, plays and poems. You will do speaking and listening activities in groups, on your own and in drama based work. At the end of the course, you will be entered for two subjects in the examinations – English and English Literature. This offers you **two GCSEs** in one course.

Course content

You will study a range of texts in your coursework. Your folder must contain work based on the following areas:

- The Novel (Pre 1914)
- Shakespeare
- Twentieth Century Drama
- Media
- Original Writing

As part of the course, you will be working with a copy of a published Anthology. This contains a series of short stories and poems from various cultures and times. It also contains the work of several poets and you will study two poets in detail. In the final examination, questions will be set on the Anthology.

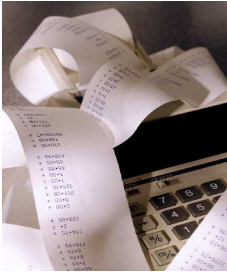
Exam Board & Website

AQA GCSE English Specification A and GCSE English Literature Specification A
www.aqa.org.uk

Assessment

You will have 3 examinations, 2 in English and 1 in English Literature. You will be expected to write reading responses, two extended writing essays and responses to the study of the Anthology and a set text. For English, 60 % of the grade is based on the examination, 20% on coursework and 20 % on Speaking and Listening. For English Literature, 70 % is based on the examination and 30 % on coursework.

For more information see: Mrs B Wedgwood



GCSE MATHEMATICS



Maths is everywhere!

A GCSE in maths is essential for many careers and courses.

Mathematics is about pattern and structure; it is about logical analysis, deduction and calculation within these patterns and structures.

Mathematics has a massive influence on our everyday lives and contributes to the wealth of the country.

Course content

The course content is determined by AQA GCSE Mathematics B (Modular) (4307). Since classes are set for Mathematics, the content of lessons is tailored to suit the ability of the students in each set. This is intended to allow you to make the best possible progress. There is a considerable degree of overlap between the sets. You should note that the level of entry in the examinations is not determined by the set you are in, but by your own performance and potential.

Exam board & website

AQA GCSE Mathematics B (Modular) (4307)

www.aqa.org.uk

Assessment

This is a modular GCSE course.

You will sit one exam in November of Year 10, which is worth 25% of your GCSE.

You will sit another exam in June of Year 10, which is also worth 25% of your GCSE.

The final exam in June of Year 11 is worth 50% of your GCSE.

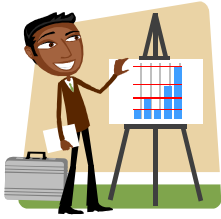
Each exam consists of a non-calculator paper and a calculator paper each worth 50% of the total mark.

There is no coursework.

There are two tiers of entry to the GCSE examination; Foundation and Higher.

The tier at which you will take the exam depends on your level of performance.

For more information see: Mr Hamshaw-Hart



GCSE STATISTICS



Statistics are all around us!

Read any newspaper or watch the TV and you will be bombarded with statistics. Statistics are used in a wide range of careers to analyse information from many different and interesting areas.

GCSE Statistics is an ideal preparation for

- An A level in Mathematics
- A level subjects which use Statistics, e.g. Geography, Psychology and Biology
- A wide range of careers

Course content

You will study this course in Y11 in addition to GCSE Mathematics.

There is some overlap with the Mathematics course and you will find that this course assists you in understanding some of your normal Mathematics GCSE.

The aim of this course is develop the following skills:

- Analyse a statistical problem and plan an appropriate strategy. Describe and use appropriate methods to select and collect data.
- Analyse and present data for comparisons and to solve probability and statistical problems.
- Use the language and facts of statistics and probability to perform computations.
- Identify and communicate inferences and interpretation of information.

Exam board & website

The course is AQA G.C.S.E. Statistics (4312)

www.aqa.org.uk

Assessment

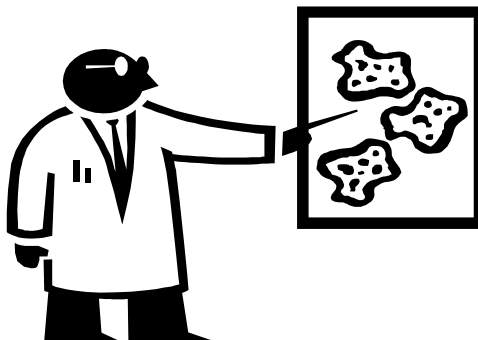
One examination paper worth 75% of the total mark.

A piece of coursework worth 25% of the total mark.

There are two levels of entry to the GCSE examination; Foundation and Higher. The level at which you will take the exam depends on your performance over the two years.

For more information see: Mr Hamshaw-Hart

SCIENCE



Science explains the world around us. It helps people to be logical, analytical, practical, imaginative and creative. Qualifications in Science are required by a wide range of employers. If you want to be at the leading edge of Human development, study Science.

Course content

In Year 10 all Students will study **Core Science**, which is made up of:

B1: Human Biology; Evolution and Environment

C1: Products from rocks; Oils, Earth and Atmosphere

P1: Energy and electricity, Radiation and the Universe

In Year 11 there is a choice of either **Additional Science** or **Additional Applied Science**.

Additional Science consists of: **B2:** Cells, Photosynthesis, Food chains, Natural cycling, Enzymes, Respiration, Homeostasis, Inheritance, Reproduction. **C2:** Atomic structure, Bonding, Balancing Equations, Ions, Alkali metals, Halogens, Properties of materials, Formula mass, Moles, Isotopes, Reversible reactions, Haber process, Rates of reactions, Endothermic and exothermic reactions, Electrolysis, Acids and alkalis. **P2:** Moving objects, Forces, Energy, Momentum, Electricity and circuits, Radioactivity.

Additional Applied Science consists of:

Unit 1: Science in the workplace

Unit 2: Science at work

Unit 3: Using Scientific skills

Exam Board & Website

Year 10 AQA Science A (4461). Year 11 AQA Additional Science (4463) **or** AQA Additional Applied Science (4863). www.aqa.org.uk

Assessment

In Year 10 there are six 30 minute multiple-choice exams each worth 12.5% of the final mark (2 exams in November, 2 in March and 2 in June) plus an investigative skills assignment worth 25% of the total mark.

In Year 11 Additional Science consists of three 45 minute written papers each worth 25% of the final mark with the same kind of practical assessment as in Year 10.

For Additional Applied Science there is a 1 hour written paper to assess Unit 2 with the other two units being assessed by portfolio work.

For more information see: Mr M Wilkinson

RELIGIOUS STUDIES



Because you want a career with a difference!

The study of RS is useful for those wishing to study journalism, politics. It is good for jobs involving deployment of human resources, and public services-including teaching, the police force and much more. A large number of our students opt to continue the subject at A-level. It goes well particularly with English, Media Studies, History or Psychology. It is held in high regard by universities, particularly if you are studying English Literature, History Philosophy, Theology or Law.

Course content

The aim of the course is for you to do an academic study of a major world religion (Christianity) i.e. to understand the impact of belief on the life of a believer. It comprises 2 sections, which you have been studying for a year already.

Mark (Paper 1A) a study of Mark's Gospel, its background meaning and status for the Christian Community today. The exam includes a detailed study of the following:

The person of Jesus

Jesus suffering death and resurrection

The Kingdom of God

Discipleship and Leadership

Faith and Prayer

Worship (including the day of rest)

All the above include learning about the impact of the application of belief and practice for the Christian believer. An integral part of this study is an awareness of the diversity of practices and views within the Christian Church itself.

Ethics (Paper 2A) a study of the effects of Christianity on behaviour, attitudes and lifestyles. This includes an exploration of the following ethical issues:

Decisions about life and living (Abortion and Euthanasia)

Marriage and relationships

Environmental issues

Crime and Punishment

Prejudice and Discrimination

War and Peace

You study issues impartially and are encouraged to develop the skills of presenting and evaluating diverse arguments. Your own opinions are encouraged and respected. You will explore issues of right and wrong, thinking about your own stance on moral issues as well as that of others.

Exam Board & Website

GCSE -Religious Studies – AQA 3061 Syllabus A options 1C and 2A

www.aqa.org.uk

Assessment

Assessment is in the form of two 1¾ hour exams (one for each part of the course)

NB Some students will be entered for one AQA paper (usually 2A) only and will be accredited with a 'short course' grade.

For more information see: Mrs A Doolan

SECTION 2

TECHNOLOGY

**You must choose 1 of the following
Technology courses**

Electronic Products

Food Technology

Graphic Products

NVQ Engineering Level 1 (Double Award)

Applied Art

ELECTRONIC PRODUCTS



Preamble – why study the subject, what makes it exciting

Technology is an exciting option that provides opportunities to explore, design and make. The courses will develop your creativity and ability to solve problems in a methodical and practical way. Much of the coursework will help you to create an analytical, enquiring approach so necessary in other subjects. These skills are much in demand from employers as well as providing a firm foundation for further and higher education or modern apprenticeships.

Course content

You will spend most of your time in year ten using computer aided design and simulation software to learn about individual components and integrated circuits. You will also build and test a variety of different projects including alarms, counters and amplifiers. In year eleven, there will be a clear focus on ‘cutting edge’ technology including Robotics and the programming of Peripheral Interface Controllers to control electronic systems.

Coursework

- A substantial piece of work consisting of a design folder and a working electronic product.

An ideal preparation for

- Further study of Electronics or Engineering
- A Level Product Design
- An apprenticeship in Engineering

Exam board and website

AQA GCSE Design and Technology: Electronic Products

http://www.aqa.org.uk/qual/gcse/des_tec_ep.php

Assessment

<i>Coursework</i>	<i>Examination</i>
<i>60%</i>	<i>40%</i>

For more information please see: Mr Gosling

FOOD TECHNOLOGY



Preamble – why study the subject, what makes it exciting

Technology is an exciting option that provides opportunities to explore, design and make. The courses will develop your creativity and ability to solve problems in a methodical and practical way. Much of the coursework will help you to create an analytical, enquiring approach so necessary in other subjects. These skills are much in demand from employers as well as providing a firm foundation for further and higher education or modern apprenticeships.

Course content

During Year 10, you will develop your knowledge and skills through a range of practical work, experiments and short assignments. A commitment to bring ingredients each week to practise the practical elements of the course is essential, as is the desire to work in a professional manner. Please note that a significant part of this work involves an awareness of commercial practice and, as such, requires boys to work to precise specifications.

The main areas covered on this course are:

- Nutrition and health
- Food preparation and processing
- Food safety and hygiene
- Control systems used in the production of food.

Coursework

- A substantial piece of work consisting of a design folder and the development of a food product.

An ideal preparation for

- A Level Food Technology or Product Design
- An apprenticeship within the Food or catering Industry

Exam board and website

AQA GCSE Design and Technology: Food Technology

http://www.aqa.org.uk/qual/gcse/des_tec_ft.php

Assessment

<i>Coursework</i>	<i>Examination</i>
60%	40%

For more information see: Mrs K Leonard

GRAPHIC PRODUCTS



Preamble – why study the subject, what makes it exciting

Technology is an exciting option that provides opportunities to explore, design and make. The courses will develop your creativity and ability to solve problems in a methodical and practical way. Much of the coursework will help you to create an analytical, enquiring approach so necessary in other subjects. These skills are much in demand from employers as well as providing a firm foundation for further and higher education or modern apprenticeships.

Course content

This is a design and modelling course for students with imagination and flair. Items to be made can be varied – a car, an aeroplane, a house or a garden. Graphical skills are important, as is the need for an open, questioning mind and knowledge of the working properties of a range of modelling materials.

Coursework

- A substantial piece of work consisting of a design folder and a prototype model and/or promotional material.

An ideal preparation for

- Further study of Graphic Design
- A Level Product Design
- An apprenticeship in Graphic Design

Exam board and website

AQA GCSE Design and Technology: Graphic Products

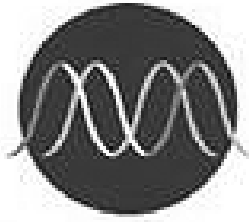
http://www.aqa.org.uk/qual/gcse/des_tec_gp.php

Assessment

<i>Coursework</i>	<i>Examination</i>
60%	40%

For more information see: Mr J Geekie

NVQ ENGINEERING LEVEL 1 (Double Award)



Preamble – why study the subject, what makes it exciting

This course will be taught at East Riding College and Beverley Grammar School.

If you like making things and are interested in new ideas and technology, then a qualification in this subject may help open doors to a wide variety of careers in the following areas:

- Automotive – car and other vehicle manufacturing and servicing
- Marine engineering
- Aeronautical engineering – aircraft design, manufacture and maintenance
- Civil engineering
- Large and small scale engineering workshops

Course content

This programme is known as Performing Engineering Operations (PEO) and it is designed to provide you with the opportunity to develop your ability and competence in an engineering environment. With progression available from level one to level two in engineering, the programme combines hands-on experience through practical project work with a supporting theoretical evidence portfolio.

Coursework

- A series of practical activities and a portfolio of evidence.

An ideal preparation for

- An apprenticeship in Engineering

Exam board and website

Please visit the East Riding College website for further details:

<http://www.eastridingcollege.ac.uk/CourseDB/progsearch.asp?%5Bprog%5D=ENG>

Assessment

<i>Coursework</i>
<i>100%</i>

For more information see: Mr A Peck or Mr M Rowntree

ART AND DESIGN APPLIED



This is a course that enables you to gain skills, knowledge and confidence through a broad range of vocationally based assignments. You will produce practical outcomes in response to work-related project briefs. You will have to consider exactly what the client wants and how best you can deliver it as well as an awareness of good, safe workshop/studio practice. You should have the opportunity to participate in some 'real-life' projects.

Course content

You will be given the opportunities to work in the following areas:

Drawing and Painting Sculpture Printmaking

Mixed Media Computer Aided Design

Unit 1: Portfolio of Work.

You are required to present a portfolio of work which must include more than one project. Each project must demonstrate an ability to sustain work from initial starting points to a final piece or pieces and include evidence of research, development of ideas and meaningful links with the work of other artists and an understanding of good working practice.

Unit 2: Externally Set Task

This is a question paper issued by the exam board from which you choose one starting point to prepare and develop a personal outcome. During this time you will have a total of 10 hours focussed study in exam conditions to produce evidence of unaided work.

Exam Board & Website

AQA

www.aqa.org.uk

Assessment

60% Coursework 40% Externally Set Task

Your teacher will give you lots of help and guidance throughout the course and you will be regularly assessed so that you know how well you are doing and how to improve your work.

During the course there will be at least one trip to a studio or workshop to help you build on your understanding and appreciation of the work of other artists, craftsmen and designers.

There are at least 33 career opportunities that are art and design related and opportunities are increasing all the time as multimedia technology rapidly develops.

For more information see: Mrs M Hall or Mr J Branton

SECTION 3

OPTION CHOICES

**You must choose 3 of the following subjects
A double award course counts as 2 choices**

**Art and Design
Asdan
Business Studies
Drama
French and German
Geography
History
ICT
Music
Physical Education
Separate Science**

ART AND DESIGN FINE ART



This is a course that enables you to develop your skills and appreciation of art and to discover the artist within you. You will be encouraged to think and work independently as well as improve your creative abilities. You do not have to be brilliant at drawing, just willing to learn new skills and methods to produce good quality outcomes. You will have the satisfaction of exhibiting your work at the end of the course.

Course content

You will be given the opportunities to work in the following areas:

Drawing and Painting Sculpture Printmaking
Mixed Media Computer Aided Design

Unit 1: Portfolio of Work.

You are required to present a portfolio of work which must include more than one project. Each project must demonstrate an ability to sustain work from initial starting points to a final piece or pieces and include evidence of research, development of ideas and meaningful links with the work of other artists.

Unit 2: Externally Set Task

This is a question paper issued by the exam board from which you choose one starting point to prepare and develop a personal outcome. During this time you will have a total of 10 hours focussed study in exam conditions to produce evidence of unaided work.

Exam Board & Website

AQA

www.aqa.org.uk

Assessment

60% Coursework 40% Externally Set Task

Your teacher will give you lots of help and guidance throughout the course and you will be regularly assessed so that you know how well you are doing and how to improve your work.

During the course there will be at least one trip to a gallery or exhibition to help you build on your understanding and appreciation of the work of other artists, craftsmen and designers.

There are at least 33 career opportunities that are art and design related and opportunities are increasing all the time as multimedia technology rapidly develops.

For more information see: Mrs M Hall or Mr J Branton

COPE (Certificate of Personal Effectiveness at Bronze, Silver and Gold level)



This is a two year course offered for four lessons per week for a small group of students who cope better with a non exam course. Students build up a portfolio of evidence leading to a qualification. During this course you will complete 12 different modules from the award book. Evidence of work completed is presented in a portfolio. There is no exam. The course is limited to 12 students and you will be expected to work as a team.

Course content

The tasks will be practical and often community based. They include work experience, links with primary school, food technology, first aid training, sports leadership and a business enterprise project. The course involves some time off the school premises on visits, community projects etc. You will need to show evidence of:

- Working with others
- Improving your own Learning
- Problem solving
- A well organised and thorough portfolio of evidence

Most students will complete their Bronze Certificate before the end of Year 10. In Year 11 you will achieve either COPE level 1 (GCSE Grade D/E) or COPE level 2 (GCSE Grade B)

For more information see: Mrs K Smith

BUSINESS STUDIES



Why Business Studies?

- An interesting course
- Good employment prospects
- Very popular at university
- Enjoyed by students
- Will make you think

Course content

Basically the course follows the syllabus set by the AQA exam board which contains themes comprising: starting a business, growing as a business, legal aspects of business, internal organisation of business, accounts, marketing, production and people in organisations. You should have relatively high numeracy skills and enjoy working with figures.

Exam Board & Website

AQA

www.aqa.org.uk

Sample exam papers can be found under 'current GCSE' on the AQA website.

Assessment

By examination based around 3 papers

Paper 1 - 40% 1 hour written paper "Starting up a Business"

Paper 2 - 35% 1 hour written paper "Growing as a Business"

Paper 3 - 25% controlled assessment "Investigating a Business" based around a pre-release study and students will have 3 hours to write up findings under controlled conditions.

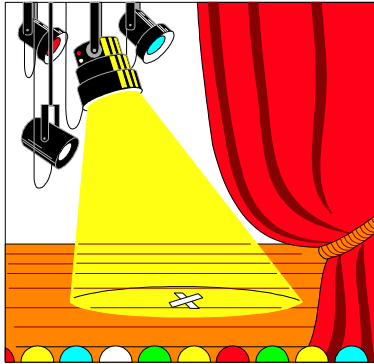
Two tier papers are offered:

Foundation = C - G grade

Higher = A* - E grade

For more information see: Mr B Coull

DRAMA



Drama is a highly enjoyable course because it is a very practical subject. If you have enjoyed drama in English lessons, you will appreciate the opportunity of having two lessons a week to develop your skills. You will work on drama scripts, improvisations and devised pieces, based on themes. You will study a play in detail and write about it in the exam. However, you do approach it in a practical way. You will also go to the theatre to see plays and write reviews about them.

Course content

In your lessons, you will prepare and perform improvisations, scripted pieces, devised thematic pieces. You will research and rehearse your chosen role. You will develop drama skills based on voice, facial expression, gesture, movement, characterisation, use of space, interaction with other characters. You will attend extra rehearsals in your own time, when approaching an assessment. You will work effectively with whoever is in your group. You will study a play in detail. You will write a coursework essay that makes comparisons between a selected element and another genre or piece of drama. You will go to see plays and write reviews about them.

Exam Board & Website

AQA GCSE Drama

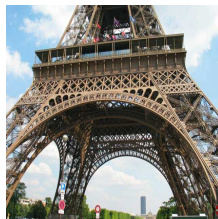
www.aqa.org.uk

Assessment

- The course is 60% practical and 40% theory.
- You will prepare and perform practical assessments throughout the course.
- Some students will be selected to perform in front of an external moderator.
- You will keep a drama log of rehearsal notes and self-evaluation.
- You will write a coursework essay comparing different texts.
- You will write two extended essays in the final examination written paper (one on the play and one review.)

For more information see: Mr A Stevenson or Mrs B Wedgwood

GCSE FRENCH AND GERMAN



In Key Stage 4 at Beverley Grammar School, you can opt to take French or German or both of these languages.

*94% of the world does not speak English as their first language
75% of the world does not speak English at all*

The idea that we can always get by because others learn English is simply not true. In today's world, languages are vital because so many jobs involve contact with other language speakers and also because we are closer than ever to other cultures and other countries. Knowledge of a foreign language can be helpful in lots of different jobs and many employers reward people with language skills with extra salary because they know they are useful in today's international business world. Languages go really well with a wide range of subjects too. When you are choosing what to do in Key Stage 4 and beyond, you will find that a language will come in very handy. For example, a language with Business, Engineering or Science will help you when you look for a job later on.

Course Content:

In both French and German, you will study four major topic areas or 'contexts' – Lifestyle, Leisure, Home & Environment and Work & Education. In each of these contexts, you will be learning more about how the language works – its grammar and structures and how they fit together, so that you can produce more complex and varied spoken and written language. In each lesson, you will be developing your skills and confidence in listening, speaking, reading and writing as well as increasing your vocabulary. You will also be finding out more about French or German speaking people and the places in which they live.

Exam Board and Website: AQA (www.aqa.org.uk)

Assessment:

The assessment in both the French and the German course is as follows:

You are tested in the four skills of listening, reading, speaking and writing. In listening and reading, you will take an examination at the end of the course and all the questions set are now written in English. There will be a separate test, at either Foundation or Higher Tier, for each of these skills. Listening and reading each carry 20% of the total marks towards your final GCSE grade.

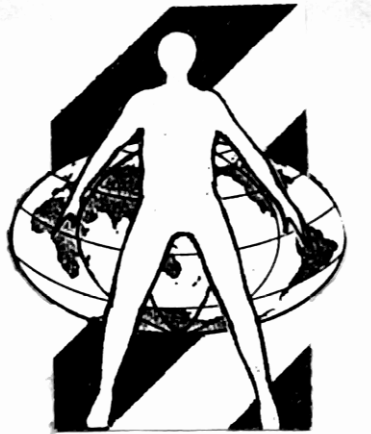
In speaking, you submit two short tasks, which are conducted and marked by your own teacher.

Both tasks will be in the form of a dialogue. Speaking carries 30% of the total marks.

In writing, you submit two controlled assessments for marking by AQA. Writing also carries 30% of the total marks.

For further information please see: Mrs A Pickering

GEOGRAPHY



You have come to an important point in your education. Are you interested in studying geography further? You should be, because geography tackles the big issues. The underlying principles of this course are:

- To produce students that are aware of their responsibility to other people, the environment and the sustainability of the planet
- To give opportunities for students to undertake individual research and investigative work and to make use of modern information technologies, including GIS.

The world in which we live is likely to change more in the next 50 years than it has ever done before. Geography explains why, and helps to prepare you for those changes. If you enjoy studying geography – carry on studying it!. You are more likely to obtain your best results in a subject you enjoy.

Course content

This course focuses on the geographical processes that shape our world through the study of physical and human geography. There are two units of work:

Unit 1: Physical Geography. You will study 3 of the following topics: <ul style="list-style-type: none">• The Restless Earth• Rocks, Resources and Scenery• Challenge of Weather and Climate• The Living World• Water on the Land• Ice on the Land• The Coastal Zone	Unit 2: Human geography. You will study 3 of the following topics: <ul style="list-style-type: none">• Population Change• Changing Urban Environments• Changing Rural Environments• The Development Gap• Globalisation• Tourism
---	---

Exam Board & Website

AQA: Syllabus A. www.aqa.org

Assessment

There are three parts:

- Unit 1 Physical Geography. 1 hour 30 minute exam (37.5% of total marks)
- Unit 2 Human Geography. 1 hour 30 minute exam (37.5% of total marks)
- Controlled Assessment: Fieldwork based investigation (25% of total marks)

For more information see: Mr C Elvidge or Mr P Gibson

HISTORY: MODERN EUROPEAN AND WORLD HISTORY



- **HISTORY** gives us a better understanding of current affairs by looking at their background and origins.
- **HISTORY** helps you weigh up questions and possibilities in your personal life and to consider your rights, responsibilities and place in society.
- **HISTORY** helps us confront racism and prejudice.
- **HISTORY** develops essential skills for many careers and life experiences; report writing and the persuasive presentation of information through inference, analysis and integration of details into a cohesive argument; decision making and planning by asking the right questions, using previous knowledge, the process of elimination, speculation and the testing of ideas; research and reading skills; interpreting and evaluating evidence.
- **HISTORY** helps us enjoy more fully and evaluate more critically art, music, literature, film, theatre and television.
- **HISTORY** tells us some cracking stories which reflect the very essence of life itself; bravery, cowardice, loyalty, treachery, honesty, love, lust, determination, success, failure and faith.
- As one of the more traditional academic subjects with essential skills **HISTORY** is a highly valued qualification by top universities and professions such as law, finance, media, journalism, business management, government and the civil service.

Course content

How was British Society changed, 1890-1918? Russia, 1905-1941. The USA and Vietnam 1954-74. A New World? 1948-2005 (Eastern Europe under communism, terrorism since 1969, the 2003 Iraq War).

This course provides considerable variety in terms of a study of different societies and cultures. The units also provide an invaluable insight into our political system and how it works (Votes for Women and social reform in Britain), different political, economic and social ideas (Russia, Northern Ireland and Israel/Palestine) and the roots of the major foreign policy issues of the early 21st century (the Middle East, the Vietnam War and Eastern Europe). Their study also involves looking at WW1, the Cold War and the USA.

Exam Board & Website

OCR

www.ocr.org.uk/historyb/newgcse

Assessment

Two written papers (Paper 1:2hrs 45% of final mark; Paper 2:1½ hrs 30% of final mark). A coursework task on The USA and Vietnam representing 25% of the final mark.

For more information see: Mr P Morgan, Mr M Cutler or Mr R Webb

INFORMATION AND COMMUNICATION TECHNOLOGY



BTEC ICT Practitioners DIPLOMA (option)

Examination board: EDEXCEL

This course is for the students who followed the **ICT Practitioners certificate** course in Year 9.

Examination: there is no written examination for the course. All assessments are practical and count towards the final examination grade.

Grades: the Year 9 course gives students the chance to gain the equivalent of 2 GCSE A* to C grades. *The diploma course* extends this to the equivalent of 4 GCSE A* to C grades.

Units of study – we are looking at covering 3 of the following units:

There are 3 modules of work covering the following areas of study:

Compulsory unit:

Computer Systems – how to connect and use different hardware, interfaces, types of computer system, range of software, working safely.

Optional units (select 2):

Hardware/Software installation and upgrade – practical experience of upgrading and installing hardware & software, configuring software, licenses and license agreements, testing installations to make sure everything works.

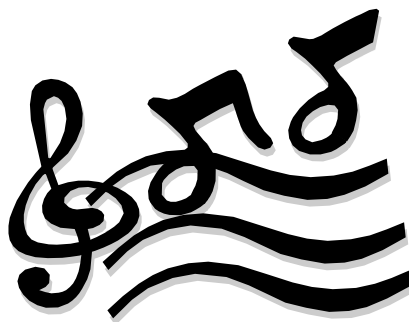
Doing business on-line – how businesses and organisations are using the Internet, how an on-line business operates, operational and staffing issues within businesses, marketing and sales.

Spreadsheet & Database software – looking at the use of spreadsheets and database within organisations, how to use the features within these packages.

This course allows students to become confident in the installation and upgrade of software and hardware in computer systems. They will also be able to develop their skills and understanding in the use of software such as spreadsheets and databases. In addition there is the chance for them to explore the use of ICT in businesses that use the Internet as a central part of their operations. Students will be expected to select 2 of the 3 optional units to study.

For more information see: Mr J Pool

MUSIC



Music is a very enjoyable subject that commands a lot of respect from employers. How many times have you heard someone say ‘I wish I could play an instruments’ or ‘I wish I’d made more effort in music?’ People know that is not an easy subject – mainly due to the variety of skills required – performing, listening and composing but it is very rewarding.

Course content

You will learn how to compose using the keyboard and various computer programmes that enable you to hear exactly what you’ve written as you write it. For a free and very simple example got to www.finalnotepad.com and try it out.

Exam board & website

Edexcel GCSE in Music

<http://www.edexcel.com/quals/gcse/gcse09/music/Pages/default.aspx>

Performing Music *Unit 1 Internally assessed 30%

One solo performance

One ensemble performance

Assessment

Recordings of both solo and ensemble performances (on CD/MD/MP3)

Scores, professional recordings or written commentary (for Realisation) for both performances

Composing Music *Unit 2 Internally assessed 30%

Two compositions, or

Two arrangements, or

One composition and one arrangement

Assessment

Recordings of both compositions/arrangements (on CD/MD/MP3)

Notated scores or written commentaries for both compositions/arrangements

Listening and Appraising *Unit 3 Externally assessed 40%

Knowledge and study of set works in the Areas of Study:

Western classical music 1600-1899, Music in the 20th century, Popular music in context & World music

Assessment

A 1-hour and 30-minute written paper. All questions relate to the set works. The paper will be in two sections:

Section A: 8 compulsory questions in response to extracts from the set works that will be played on a CD during the examination (68 marks)

Section B: one question from two optional questions on the set works, requiring extended writing (12 marks)

The specification content is defined by four Areas of Study. Each Area of Study includes three set works that will be the subject of the examination in Unit 3. The compositions in Unit 2 will be defined by the Areas of Study.

Area of Study 1 Area of Study 2 Area of Study 3 Area of Study 4

Lessons – 2 lessons a week – one in MU1 and one in ICT1 using specialist music software

For more information see: Mrs L Turner

PHYSICAL EDUCATION



- You will learn how to perform better at sport and take on the roles of coach, analyser, leader, official
- You will learn about health and fitness and how to train for different activities
- You will understand the factors that influence individuals and groups taking part
- You may want to have a career in sport e.g. physiotherapist, coaching, teaching
- You may want to go on to study A Level and then take a degree in Physical Education at university
- You have a sporting qualification to add to your other G.C.S.E.'s. You have a range of skills to take to the next stage of your life.

Course content

Theory Based Lessons

- Health and fitness factors affecting performance
- The principles of training. How to get fit for activities
- Factors affecting individual performance and participation
- Social and cultural factors affecting participation.

Practical Based Activities

You will do a range of activities. You will be involved and assessed as:

- a performer
- an organiser
- a leader / coach
- an official

Your best four assessments of which two must be as a performer will count for your GCSE.

Exam Board & Website

AQA www.aqa.org.uk

Assessment

- Theory based lessons leading to an examination in the summer of year 11 – 40% of the marks
- Practical based activities. – 60% of the marks.

For more information see: Mr R Walters

SEPARATE SCIENCES



Separate Sciences gives you the extra information and skills you need to get a fuller understanding of Science. This greater depth of knowledge provides a strong foundation for studying Sciences at “A” level.

Course content

If you select to do GCSE Separate Sciences within the option block you will do extra units that add to the units you do in your normal science lessons, so that instead of getting GCSE’s in Core Science and Additional Science you will get GCSE’s in Biology, Chemistry and Physics (3 GCSE’s in total).

The extra topics to do 3 separate Sciences are:

B3: Diffusion, Osmosis, Breathing, Exercise, Circulation, Kidneys, Micro-organisms

C3: Periodic table, Acids and alkalis, Solubility, Energy changes in reactions, Analysing substances.

P3: Moments, Circular motion and satellites, Mirrors and lenses, Sound, Electromagnetism, Stars.

Exam Board & Website

AQA Biology (4411)

AQA Chemistry (4421)

AQA Physics (4451)

www.aqa.org.uk

Assessment

For B1, C1 & P1 there are 2 module tests for each unit (6 x 30 min multiple-choice papers)

For B2, B3, C2, C3, P2 & P3 there is an exam for each unit (6 x 45 minute written response papers). This is worth 75% of the GCSE’s

The centre assessed work is 3 practical skills assessments (1 in each subject), each worth 25% of a GCSE.

For more information please contact: Mr M Wilkinson

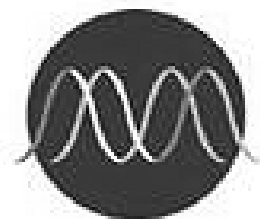
SECTION 4

DIPLOMAS

The following diplomas are available to study next year:

Engineering
Construction and the Built Environment
Creative and Media
Hair and Beauty
Business and Administration Finance

THE HIGHER DIPLOMA IN ENGINEERING AT BEVERLEY GRAMMAR SCHOOL AND EAST RIDING COLLEGE



The qualification will be equivalent to 7 GCSE passes at Grades A*-C and so you will need to have a good ability in English, mathematics and science.

Engineering is all around us. It plays an important part in what we do every day and has an impact on everyone's life. Engineering creates the infrastructure in which we live, work and spend our leisure time. So, not surprisingly, the engineering sector is huge. Over 1.6 million people already work in engineering-related jobs in sectors like health, entertainment, farming, architecture, mechanics, electronics, telecommunication, biomedicine, aerospace, transport, design, oil, gas, chemical and nuclear energy and utilities, engineering manufacture and building services.

If you enjoy challenges and problem-solving, are creative, innovative, have flexible skills and are interested in new technology, your career prospects in engineering are excellent.

The Diploma in Engineering opens up the ideas and concepts behind engineering, and how they impact the modern world. You'll be introduced to key engineering principles such as design, materials, electronic systems, maintenance and manufacturing. You'll also get lots of practical experience and study what makes innovations succeed, how new materials contribute to design and how to develop and launch new ideas.

The Diploma in Engineering focuses on three main themes:

The Engineered World

You'll learn about the different engineering sectors and engineering's diverse role. You could, for example, research and examine the use of microprocessor technology in CGI movies, theme park rides or a music sound studio.

Discovering Engineering Technology

In addition to a range of other subjects, you'll learn how to use computer software packages and systems to design and manufacture engineering components. You could, for example, set up and use computer systems to design a one-off artificial limb for an Olympic athlete.

Engineering the Future

You'll learn about the relationship between innovative engineering design and business success. You could, for example, find out how to develop innovative and creative ideas and get all-important finance for a project.

Assessment

The course comprises 7 internally assessed units and 1 external examination.

An ideal preparation for

A career in Engineering, Science, Technology, Construction or Design.

In addition, an engineering qualification is an ideal preparation for a wide range of other careers where a logical and practical approach to the application of skills and knowledge is important.

For further information please see: Mr Gosling, Engineer@beverleygrammar.co.uk
www.engineeringdiploma.com www.direct.gov.uk/diplomas

HIGHER DIPLOMA IN CONSTRUCTION AND THE BUILT ENVIRONMENT



The construction and built environment industry is one of the largest and most important economic sectors in the UK. If you want to work in the construction and built environment sectors, you need a good understanding of why the built environment is significant to the public, the environment and the economy, and how to work safely in the industry.

This Diploma focuses on three main themes:

- **Design the built environment:** Learn how the built environment is designed and constructed, how it impacts on people and communities, and how history, politics and economics affect it.
- **Create the built environment:** Develop a range of skills and knowledge needed in different industries – for example, using tools and understanding modern construction methods and materials.
- **Value and use the built environment:** Analyse the need for good management and continuous maintenance, and understand the importance of good design, workmanship and teamwork.

How is the diploma made up?

The Level 2 or Higher Diploma will total 800 guided learning hours and is equivalent of 7 GCSE's at grades A* - C.

- **Principal Learning:** 50% of the course. This core section will teach you the main things that you need to know about the sector.
- **Additional & Specialist Learning:** You will be able to choose one of the GCSE subject from the option block.
- Functional skills in English, Maths & ICT.
- A project (based upon an aspect of the course that really interests you.).
- Personal learning and Thinking Skills.
- Work experience: Minimum of 10 days.

Delivery of the course & entry requirements:

You will study for the Diploma for two days per week. You will spend one full day at College (Bishop Burton) and the other day in school.

As the Diploma is worth the equivalent of 7 GCSE's grade A* - C, it will be demanding. You will need to be attaining a minimum of Level 5's in your KS3 subjects, particularly the core subjects of English, Maths & Science, and have the ability to achieve a minimum of grade C in GCSE subjects.

Entry requirements for the Diploma will include a context based aptitude test and interview. Evidence of very good attendance, behaviour and commitment are also required.

What will a Diploma in Construction and the Built Environment lead to?

It will give you the skills you need for either university or work and is a first step towards a career in this area.

It could lead to a university degree in construction management, building services engineering, housing practice, planning or architecture.

Or it could help you begin a career as a building services contractor, construction worker, electrician, engineer, urban planner, property developer, estate agent, restorer of old buildings or architect.

However, the Diploma in Construction and the Built Environment doesn't mean you have to opt for a career in this sector. Because the Diploma teaches a mix of subjects, it will give you the skills (and qualifications) that will enable you to enter the Sixth Form and beyond that to university and the world of work, no matter what you choose to do.

Exam Board and Websites:

AQA. www.aqa.org www.direct.gov.uk/diplomas www.cbdiploma.co.uk

For more information see: Mr Elvidge

DIPLOMAS



A range of other Diplomas are being offered in the local area that could be available to Beverley Grammar School students.

For further information regarding specific Diplomas, please contact the staff named below at their individual institutions:

Creative and Media - Claire Boynton, Longcroft School
Claire.boynton@longcroft.eriding.net

The Creative and Media Diploma is an exciting new opportunity to allow students to explore their creativity and develop skills appropriate for further study or a career in the workplace.

Hair and Beauty - Mrs Arundell, East Riding College
Karen.Arundel@eastridingcollege.ac.uk

Diplomas in Hair and Beauty Studies equip learners with skills and knowledge which prepare them for a career in the hair and beauty industry. Diplomas enable learners to make informed decisions to progress into employment with industry training, or to further or higher education.

Business and Administration Finance - Mrs Arundell, East Riding College
Karen.Arundel@eastridingcollege.ac.uk

This diploma will run in Bridlington.

SECTION 5

COLLEGE COURSES

The following College Courses are available to study next year. Please see Mr Jones if you are interested in studying one of these or if there is one not listed which you would like to study:

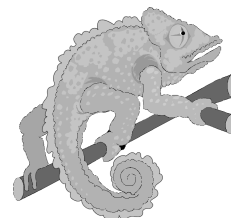
BISHOP BURTON COLLEGE

**BTEC First Certificate in Animal Care Level 2
or NPTC (NVQ) Animal Care Level 1 (Double Award)
BTEC First Diploma in Public Services**

EAST RIDING COLLEGE

**Construction/City and Guilds Basic Bricklaying
Hospitality/Skills for Working Life Certificate in Catering
Motor Vehicles/City and Guilds Certificate
NVQ Level One Performing Engineering Operations**

BTEC First Certificate in Animal Care Level 2 or NPTC (NVQ) Animal Care Level 1 (Double Award)



These courses are run in partnership with Bishop Burton College. You will be taught at the college and will have use of all their excellent facilities for studying Animal Care. These include a reptile house, aviaries and collections of show and exotic animals. There is also a boarding kennels, grooming parlour and cattery. Please note that transport, by minibus, will be provided to and from the college campus.

Both courses in Animal Care are designed to give you a broad base of experience in all areas of the animal care industry. If you decide to use these courses as a springboard for a career it is useful for such careers as a vet or zoo keeper. Furthermore, they can be useful when applying for jobs in safari parks or wildlife parks, dog handling or training and kennel or cattery management. The courses would also help you to work for the RSPCA, PDSA or Guide Dogs for the Blind.

Course content

BTEC First Certificate in Animal Care Level 2

This is made up of 3 units:

- Animal Care - principles of housing animals and developing competence in the handling and nutrition of animals
- Animal Health - maintenance of animal health and first aid
- Animal Establishments - variety of animal establishments found in UK and the working practices within them.

NPTC (NVQ) Animal Care Level 1

This is made up of 5 units:

- Assist with movement and handling of animals
- Assist with animal foodstuffs
- Maintain safe and affective working practices
- Assist with the care of animals
- Assist with animal accommodation.

Exam Board & Website

BTEC First Certificate - Edexcel: www.edexcel.org.uk

NPTC (NVQ) - City and Guilds: www.nptc.org.uk/qualifications

Assessment

BTEC - by written assignments and observation of tasks

NPTC - by written worksheets and observation of tasks

**For more information see: Mr L Jones
Bishop Burton College: Emma Gray/Jenny Simpson**

BTEC FIRST DIPLOMA IN PUBLIC SERVICES



What is the course about?

This is a practical, work-related course. You learn by completing projects and assignments that are based on realistic workplace situations, activities and demands.

It is designed to offer a route into the armed and uniformed services, in particular the Army, Royal Navy and RAF, Police, Fire Service, Coastguard, Prison Service or Ambulance Service.

What will I study?

- Public Service Skills
- Uniformed Public Service Employment
- Uniformed Public Service Fitness

Plus 3 specialist units, for example:

- Crime and its effects on society
- Expedition Skills
- Law and its impact on the individual
- Outdoor activities
- Sport and recreation
- Driving and collisions
- Land navigation with map and compass

What next?

You can go on to a wide range of public sector occupations as described above. Alternatively, you can continue further education study.

This course will be run in conjunction with either Bishop Burton College or East Riding College.

For more information see: Mr L Jones

Construction/City and Guilds Basic Bricklaying 6217/07



What is the course about?

The course is designed as an introduction to the ‘trowel trades’ – basic brickwork.

What will I study?

- Developing skills and working safely in construction
- Starting work in construction
- Developing trowel skills
- Basic building maintenance

What next?

This qualification can provide a progression onto higher level qualifications such as the CITB City and Guilds NVQ in Brickwork.

For more information see: Mr L Jones

Hospitality/Skills for Working Life Certificate in Catering



What is this course about?

This course is designed as an introduction to working in the hospitality and catering industry. You will have the opportunity to work in a busy kitchen environment, restaurant and bar.

What will I study?

- Food preparation and cooking – this is carried out in the College restaurant kitchens
- Food and drink service – this is carried out in the College restaurant kitchens

What next?

This will prepare you for the NVQ Level 1 and 2 Professional Catering course. This, in turn, could lead to a job in the hospitality and catering industry. You could work in a hotel, restaurant, public house or canteen. You may even work at sea.

For more information see: Mr L Jones

Motor Vehicle/City and Guilds Certificate 3901



What is the course about?

This course is about the maintenance and repair of light motor vehicles. It is designed to broaden students' occupational knowledge and underpinning knowledge requirements developed by the Automotive Skills Council's National Occupational Standards.

What will I study?

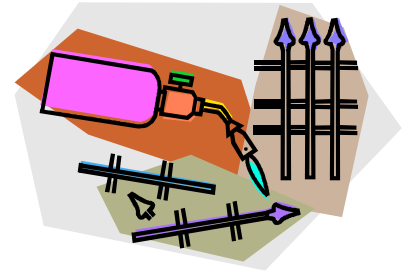
- Working safely and effectively during light vehicle maintenance and repair
- Foundation skills for light vehicle maintenance and repair
- Light vehicle construction and routine maintenance
- Operating principles of light vehicle tyres, brakes, steering and suspension systems
- Operating principles of light vehicle engines
- Operating principles of light vehicle transmission systems
- Operating principles of light vehicle electrical and electronic systems.

What next?

This course could help you progress on to an apprenticeship.

For more information see: Mr L Jones

NVQ Level One Performing Engineering Operations



What is this course about?

This course is designed to give you the introductory knowledge and skills relevant to engineering and manufacturing practices. A great deal of time will be spent on the practical tasks and activities.

What will I study?

- Welding
- Mechanics
- Engineering

What next?

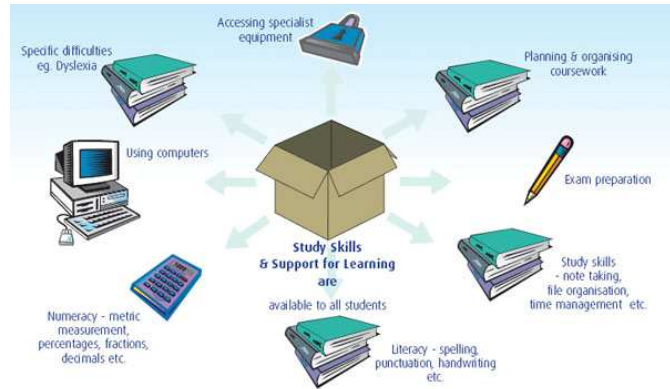
This course will help you get a job, progress onto an NVQ Level 2 course or secure an apprenticeship or advanced apprenticeship.

For more information see: Mr L Jones

SECTION 6

**STUDENT SUPPORT
AND PERSONAL DEVELOPMENT**

LEARNING SUPPORT



At Key Stage 4 students with additional needs continue to receive support both within and outside the classroom.

A workshop is available at lunchtimes, except Wednesday, for help with written assignments, revision tasks, and to reinforce work needing further explanation. There are lots of materials in the room that you may find useful. Specific help is provided leading up to coursework deadlines.

During study leave in Year 11, the Learning Support Team offer individual and group revision sessions in most subjects.

It is necessary to make separate access arrangements in exams for some students. This is in line with support the student has in their ongoing assessments and will be done following consultation with parents, and by formal application to the exam board.

It is not always appropriate for a student to study 10 or more GCSEs. A very small number of students have Guided Private Study sessions in the Learning Support area. They work on tasks set by their subject teachers, revision tasks, or agreed homework tasks. Guided study sessions require the ability to work independently and responsibly in the Learning Support area.

For more information see: Mrs K Smith

STUDY PLUS



This course is designed to increase your chances of securing 5 or more passes at GCSE, at grades A*-C, including the all important measure: mathematics and English. The course is intended to strengthen key areas of weakness in Literacy and Numeracy and to teach the specific study skills necessary for you to achieve success at this level, whilst improving your motivation across a whole range of subjects.

The course is designed to support a small group of targeted students who attain mid level 5s in mathematics and/or English at the end of Key Stage 3, and who therefore have the potential to attain Cs and above, but who are currently predicted lower grades by their teachers.

STUDY PLUS is a timetabled programme taught in units that each last around three weeks, with many involving the use of IT. The themes of the units are diverse and stimulating, e.g. Deal or No Deal, Disaster Relief, Towers, Dragon's Lair, Escape from Mars. Through this exciting, innovative and interactive approach, you will learn necessary skills that can be transferred across all your subjects.

If you are a candidate for this course, it is quite likely that you and your family will be approached by the school so that you can be made aware of the necessary level of commitment.

There is no formal assessment or examination in STUDY PLUS.

For more information see: Miss R Culpan, Mrs M Thompson

CAREERS EDUCATION

The Careers Library

All students and parents are invited to use the Careers Library at breaks, lunchtimes or after school. We also have a Connexions 'Pop In' session every Tuesday lunchtime. You will be shown how to obtain maximum benefit from the excellent facilities during your SPACE lessons. Up-to-date information services include:-

- the latest computer software (now installed in ICT1, ICT2, ICT3 and IT 4 and School Library extension)
- a careers DVD and CD library
- prospectuses from all universities and colleges (also in the school library)
- reference books, pamphlets and magazines
- careers notice boards

Careers Education

Is approached on a modular basis and includes:-

- Self Knowledge - personal qualities and needs
- Occupational Research - job descriptions/entry and training requirements
- 16+ Choices - 'A' Level, BTEC & NVQ Routes and Armed Forces
- Application/Interview Skills - application forms/interview technique
- Individual Action Plans - identification of aims and learning needs
- Work Experience - 'hands on' approach to the world of work
- Health & Safety at work - essential knowledge for all potential employees
- Progress File - curriculum vitae (CV) and personal statement

Your work experience is an important part of the school curriculum. You will have the opportunity to see at first hand what the world of work is like.

You will spend one week in the Summer Term of Year 10 on your work experience, having applied for the positions which best meet your interests and future plans. The placements are provided, in the main, by the Connexions Service.

Students will also be provided with opportunities to visit East Riding College and Bishop Burton College on 'taster' days. A variety of guest speakers will also inform students of the choices available at 16+. For example, the Armed Forces, CITB and local colleges.

Careers Guidance

All members of staff, either through their subject or student support role, provide careers guidance. Furthermore, in Year 10 or Year 11 you will have at least one careers guidance interview with a Careers Adviser. Additional guidance is always available on request. Careers Advisers will also be available on Parents' Evening.

For more information see: Mr L Jones

SOCIAL, PERSONAL AND CITIZENSHIP EDUCATION (SPACE)

SPACE is not so much a subject as a way of preparing you for life. It complements the subjects you study by providing opportunities for you to learn about some of the important issues you will face in the adult world. You are encouraged to develop the skills which help you make informed decisions and judgements. You will explore the results of your own attitudes and actions on yourselves, on others and on the world around you.

The course provides knowledge, allows debate and promotes empathy and tolerance.

There are a number of modules comprising the SPACE course. These include:-

- HEALTH EDUCATION - including cancer, smoking, alcohol, drugs, diet and heart disease.
- SEX EDUCATION - including AIDS, STIs, contraception, relationships, abortion, birth, child care etc.
- CITIZENSHIP - including crime and justice, prejudice, racism, war, bullying, suicide conservation, pollution, over-population, old age, death, the nuclear issue and youth culture.
- CAREERS EDUCATION - including planning, finding out about careers and the qualifications required for them, assessing and developing skills and qualities, writing job applications, coping with interviews and work experience.
- EXAM REVISION SKILLS - how to prepare for examinations and choose a career.

For more information see: Mrs R Taylor

YEAR 10 SUBJECT CHOICES

Everyone will take the following core subjects:

English	-	4 periods per week (3 in Year 11)
Mathematics	-	3 periods per week (4 in Year 11)
Science	-	5 periods per week
Games	-	2 periods per week
R.E.	-	2 periods per week (1 for route 2 & 3 students)
Social, Personal & Citizenship Education (SPACE)	-	1 period per week

Route 1 students:

will also choose a Technology subject - 2 periods per week

and a further 3 subjects from Section 3

Option A	-	2 periods per week
Option B	-	2 periods per week
Option C	-	2 periods per week

Route 2 students:

Will choose a diploma course to study which will consist of the following:

Tuesday will be principal learning	-	5 periods per week
Functional Skills and the project	-	2 periods per week
Additional Specialist Learning or Option C	-	2 periods per week

Route 3 students:

Will choose a college course to follow which will consist of the following: -

Tuesday will be in college	-	5 periods per week
Additional literacy and numeracy (Study Plus)	-	2 periods per week
Option C	-	2 periods per week

Also:

Please remember courses may not run if there are not enough students choosing them and that you are therefore asked to indicate your reserve choice in the appropriate box.

Once all the choices forms are returned the teaching groups will be arranged to maximise the number of students who can study their first choices.

It is expected that the vast majority of students will be able to take their first choices but this cannot be guaranteed. Any student who is unable to take their first choice will be seen by Mr Hodson during April and May to discuss possible alternatives.

Key Stage 4 Choices 2009 - Home Copy

You need to decide which of the Option subjects you wish to study in Years 10 and 11 from the following list. There is no guarantee that you will be able to study these subjects, but it is hoped to be able to accommodate the majority of students. Any student who cannot study their first choices will be seen after Easter to discuss possible alternatives.

The Options choices form must be returned to school by **Friday 27 March** at the very latest.

Route 1 students choose 3 from the following list plus 1 technology subject.

Route 2 students choose 1 diploma plus 1 from the following list

Route 3 Students choose 1 college course plus 1 from the following list

Please put your favourite choice first and your least favourite third.

- Art and Design
- Asdan
- Business Studies
- Drama
- French
- Geography
- German
- History
- ICT
- Music
- Physical Education
- Separate Science
- Study Plus

Route 1 students also need to make a Technology choice from the following list:

- Electronic Products
- Graphics Products
- Food
- **NVQ Engineering – Double**
- Applied Art

If you choose Engineering - Double you must write it as a Technology choice **and** one of your other three choices

Route 2 students need to choose 1 of the following diplomas and 1 subject from the list as first choice.

- Engineering
- Construction and the Built Environment
- Creative and Media
- Hair and Beauty
- Business & Administration Finance

Route 3 students should see Mr Jones and choose any of the college courses on offer.

1 st Choice	
2 nd Choice	
3 rd Choice	
Reserve	
Technology Choice	
Diploma Choice	
College Choice	

Name: _____

Form _____

Parent's signature _____

Form Teacher's signature _____

Key Stage 4 Choices 2009 - School Copy

You need to decide which of the Option subjects you wish to study in Years 10 and 11 from the following list. There is no guarantee that you will be able to study these subjects, but it is hoped to be able to accommodate the majority of students. Any student who cannot study their first choices will be seen after Easter to discuss possible alternatives.

The Options choices form must be returned to school by **Friday 27 March** at the very latest.

Route 1 students choose 3 from the following list plus 1 technology subject.

Route 2 students choose 1 diploma plus 1 from the following list

Route 3 Students choose 1 college course plus 1 from the following list

Please put your favourite choice first and your least favourite third.

- Art and Design
- Asdan
- Business Studies
- Drama
- French
- Geography
- German
- History
- ICT
- Music
- Physical Education
- Separate Science
- Study Plus

Route 1 students also need to make a Technology choice from the following list:

- Electronic Products
- Graphics Products
- Food
- **NVQ Engineering – Double**
- Applied Art

If you choose Engineering - Double you must write it as a Technology choice **and** one of your other three choices

Route 2 students need to choose 1 of the following diplomas and 1 subject from the list as first choice.

- Engineering
- Construction and the Built Environment
- Creative and Media
- Hair and Beauty
- Business & Administration Finance

Route 3 students should see Mr Jones and choose any of the college courses on offer.

1 st Choice	
2 nd Choice	
3 rd Choice	
Reserve	
Technology Choice	
Diploma Choice	
College Choice	

Name: _____

Form _____

Parent's signature _____

Form Teacher's signature _____

Diploma Expression of Interest Form Route 2 students only

If you are thinking about following a diploma course you must complete the form below and return it to School by **Tuesday 3 February** at the very latest.

If you complete this form you can change your mind at any time, withdraw from the diploma and follow Route 1.

Please tick which diploma you are considering following:

Engineering	
Construction and the Built Environment	
Creative and Media	
Hair and Beauty	
Business and Administration Finance	

Name: _____ Form _____

Parent's signature _____ Form Teacher's signature _____

Comments or Concerns

